

For Research Use Only

# PSF3 Polyclonal antibody

Catalog Number: 16345-1-AP



## Basic Information

**Catalog Number:**

16345-1-AP

**Size:**

150ul, Concentration: 200 ug/ml by Nanodrop and 167 ug/ml by Bradford method using BSA as the standard;

**Source:**

Rabbit

**Isotype:**

IgG

**Immunogen Catalog Number:**

AG9534

**GenBank Accession Number:**

BC014437

**GeneID (NCBI):**

64785

**UNIPROT ID:**

Q9BRX5

**Full Name:**

GIN5 complex subunit 3 (Psf3 homolog)

**Calculated MW:**

216 aa, 25 kDa

**Observed MW:**

25-30 kDa

**Purification Method:**

Antigen affinity purification

**Recommended Dilutions:**

WB 1:500-1:1000

IHC 1:50-1:500

IF/ICC 1:20-1:200

## Applications

**Tested Applications:**

WB, IHC, IF/ICC, ELISA

**Species Specificity:**

human, mouse, rat

**Note-IHC: suggested antigen retrieval with TE buffer pH 9.0; (\*) Alternatively, antigen retrieval may be performed with citrate buffer pH 6.0**

**Positive Controls:**

WB : MCF7 cells, HeLa cells

IHC : human ovary cancer tissue,

IF/ICC : HeLa cells,

## Storage

**Storage:**

Store at -20°C. Stable for one year after shipment.

**Storage Buffer:**

PBS with 0.02% sodium azide and 50% glycerol pH 7.3.

Aliquoting is unnecessary for -20°C storage

\*\*\* 20ul sizes contain 0.1% BSA

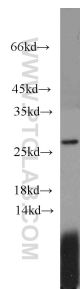
For technical support and original validation data for this product please contact:

T: 1 (888) 4PTGLAB (1-888-478-4522) (toll free in USA), or 1(312) 455-8498 (outside USA)

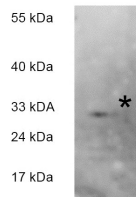
E: [proteintech@ptglab.com](mailto:proteintech@ptglab.com)  
W: [ptglab.com](http://ptglab.com)

This product is exclusively available under Proteintech Group brand and is not available to purchase from any other manufacturer.

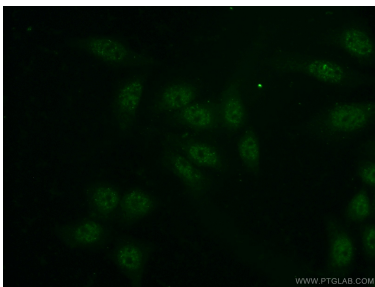
## Selected Validation Data



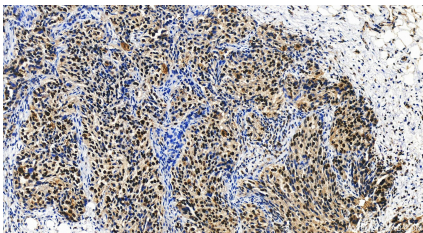
MCF7 cells were subjected to SDS PAGE followed by western blot with 16345-1-AP (GINS3 antibody) at dilution of 1:1000 incubated at room temperature for 1.5 hours.



WB result from Andre Franz in HeLa cell of 16345-1-AP (anti-GINS3).



Immunofluorescent analysis of (-20°C Ethanol) fixed HeLa cells using 16345-1-AP (GINS3 antibody) at dilution of 1:50 and Alexa Fluor 488-conjugated AffiniPure Goat Anti-Rabbit IgG(H+L).



Immunohistochemical analysis of paraffin-embedded human ovary cancer tissue slide using 16345-1-AP (PSF3 antibody) at dilution of 1:100 (under 20x lens). Heat mediated antigen retrieval with Tris-EDTA buffer (pH 9.0).