

For Research Use Only

# GMPS Polyclonal antibody

Catalog Number: 16376-1-AP

7 Publications



## Basic Information

### Catalog Number:

16376-1-AP

### Size:

150ul, Concentration: 450 ug/ml by Nanodrop and 340 ug/ml by Bradford method using BSA as the standard;

### Source:

Rabbit

### Isotype:

IgG

### Immunogen Catalog Number:

AG9350

### GenBank Accession Number:

BC012178

### GeneID (NCBI):

8833

### UNIPROT ID:

P49915

### Full Name:

guanine monophosphate synthetase

### Calculated MW:

693 aa, 77 kDa

### Observed MW:

67 kDa

### Purification Method:

Antigen affinity purification

### Recommended Dilutions:

WB: 1:500-1:3000

IP: 0.5-4.0 ug for 1.0-3.0 mg of total protein lysate

IHC: 1:50-1:500

## Applications

### Tested Applications:

WB, IP, IHC, ELISA

### Cited Applications:

WB, IHC

### Species Specificity:

human, mouse, rat

### Cited Species:

human, mouse

**Note-IHC: suggested antigen retrieval with TE buffer pH 9.0; (\*) Alternatively, antigen retrieval may be performed with citrate buffer pH 6.0**

### Positive Controls:

**WB** : HeLa cells, HL-60 cells, Jurkat cells, mouse brain tissue, mouse testis tissue

**IP** : HeLa cells,

**IHC** : human liver cancer tissue,

## Notable Publications

Author	Pubmed ID	Journal	Application
Jing Wang	34520390	Aging (Albany NY)	WB
Yajing Lv	33186350	PLoS Biol	WB, IHC
Eunus S Ali	32485148	Mol Cell	WB

## Storage

### Storage:

Store at -20°C. Stable for one year after shipment.

### Storage Buffer:

PBS with 0.02% sodium azide and 50% glycerol, pH7.3

Aliquoting is unnecessary for -20°C storage

\*\*\* 20ul sizes contain 0.1% BSA

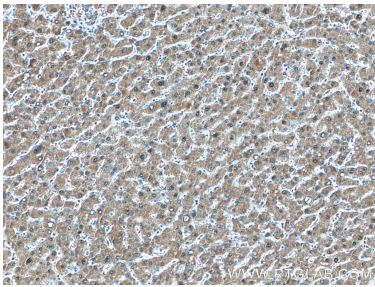
For technical support and original validation data for this product please contact:

T: 1 (888) 4PTGLAB (1-888-478-4522) (toll free in USA), or 1(312) 455-8498 (outside USA)

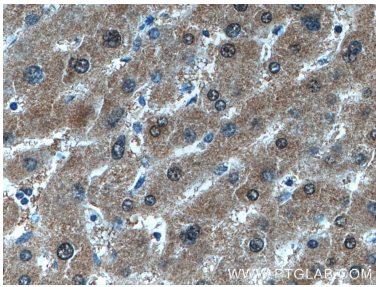
E: [proteintech@ptglab.com](mailto:proteintech@ptglab.com)  
W: [ptglab.com](http://ptglab.com)

This product is exclusively available under Proteintech Group brand and is not available to purchase from any other manufacturer.

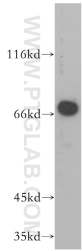
Selected Validation Data



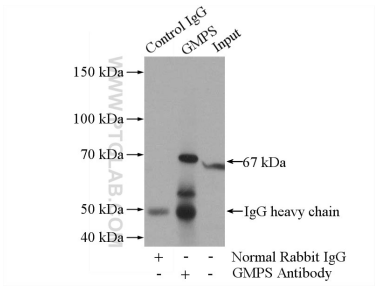
Immunohistochemical analysis of paraffin-embedded human liver cancer tissue slide using 16376-1-AP (GMPS antibody) at dilution of 1:100 (under 10x lens).



Immunohistochemical analysis of paraffin-embedded human liver cancer tissue slide using 16376-1-AP (GMPS antibody) at dilution of 1:100 (under 40x lens).



HeLa cells were subjected to SDS PAGE followed by western blot with 16376-1-AP (GMPS antibody) at dilution of 1:800 incubated at room temperature for 1.5 hours.



IP result of anti-GMPS (IP:16376-1-AP, 4ug; Detection:16376-1-AP 1:800) with HeLa cells lysate 1080ug.