

For Research Use Only

# MRPS28 Polyclonal antibody

Catalog Number: 16378-1-AP

2 Publications



## Basic Information

<b>Catalog Number:</b> 16378-1-AP	<b>GenBank Accession Number:</b> BC010150	<b>Purification Method:</b> Antigen affinity purification
<b>Size:</b> 150ul , Concentration: 550 ug/ml by Nanodrop and 300 ug/ml by Bradford method using BSA as the standard;	<b>GeneID (NCBI):</b> 28957	<b>Recommended Dilutions:</b> WB: 1:1000-1:4000 IHC: 1:500-1:2000 IF/ICC: 1:50-1:500
<b>Source:</b> Rabbit	<b>UNIPROT ID:</b> Q9Y2Q9	
<b>Isotype:</b> IgG	<b>Full Name:</b> mitochondrial ribosomal protein S28	
<b>Immunogen Catalog Number:</b> AG9354	<b>Calculated MW:</b> 187 aa, 21 kDa	
	<b>Observed MW:</b> 21 kDa	

## Applications

<b>Tested Applications:</b> WB, IHC, IF/ICC, ELISA	<b>Positive Controls:</b> WB : COLO 320 cells, IHC : human liver tissue, IF/ICC : HeLa cells,
<b>Cited Applications:</b> WB	
<b>Species Specificity:</b> human, mouse, rat	
<b>Cited Species:</b> human	
<b>Note-IHC: suggested antigen retrieval with TE buffer pH 9.0; (*) Alternatively, antigen retrieval may be performed with citrate buffer pH 6.0</b>	

## Notable Publications

Author	Pubmed ID	Journal	Application
Juliette Pulman	30566640	Hum Mol Genet	WB
Elena Lavdovskaia	38992089	Nat Struct Mol Biol	WB

## Storage

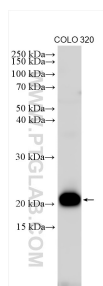
**Storage:**  
Store at -20°C. Stable for one year after shipment.  
**Storage Buffer:**  
PBS with 0.02% sodium azide and 50% glycerol, pH7.3  
Aliquoting is unnecessary for -20°C storage

\*\*\* 20ul sizes contain 0.1% BSA

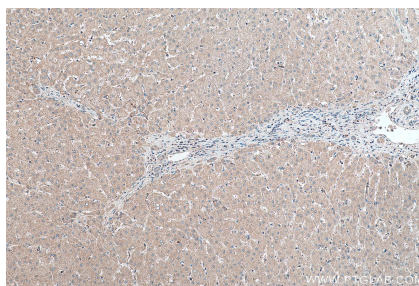
For technical support and original validation data for this product please contact:  
T: 1 (888) 4PTGLAB (1-888-478-4522) (toll free in USA), or 1(312) 455-8498 (outside USA)  
E: [proteintech@ptglab.com](mailto:proteintech@ptglab.com)  
W: [ptglab.com](http://ptglab.com)

This product is exclusively available under Proteintech Group brand and is not available to purchase from any other manufacturer.

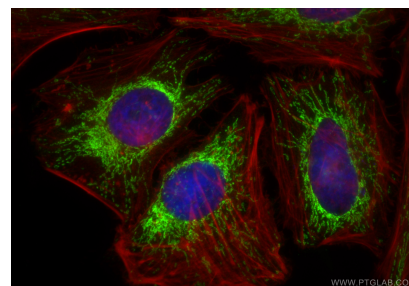
## Selected Validation Data



COLO 320 cells were subjected to SDS PAGE followed by western blot with 16378-1-AP (MRPS28 antibody) at dilution of 1:2000 incubated at room temperature for 1.5 hours.



Immunohistochemical analysis of paraffin-embedded human liver tissue slide using 16378-1-AP (MRPS28 antibody) at dilution of 1:1000 (under 10x lens). Heat mediated antigen retrieval with Tris-EDTA buffer (pH 9.0).



Immunofluorescent analysis of (4% PFA) fixed HeLa cells using MRPS28 antibody (16378-1-AP) at dilution of 1:200 and CoraLite®488-Conjugated Goat Anti-Rabbit IgG(H+L) (SA00013-2), CL594-Phalloidin (red).