

For Research Use Only

# PISD Polyclonal antibody

Catalog Number: 16401-1-AP

Featured Product

5 Publications



## Basic Information

### Catalog Number:

16401-1-AP

### Size:

150ul, Concentration: 450 ug/ml by Nanodrop;

### Source:

Rabbit

### Isotype:

IgG

### Immunogen Catalog Number:

AG9499

### GenBank Accession Number:

BC001482

### GeneID (NCBI):

23761

### UNIPROT ID:

Q9UG56

### Full Name:

phosphatidylserine decarboxylase

### Calculated MW:

375aa, 43 kDa; 408aa, 46 kDa

### Observed MW:

45-55 kDa

### Purification Method:

Antigen affinity purification

### Recommended Dilutions:

WB 1:1000-1:8000

IP 0.5-4.0 ug for 1.0-3.0 mg of total protein lysate

IHC 1:20-1:200

## Applications

### Tested Applications:

WB, IHC, IP, ELISA

### Cited Applications:

WB

### Species Specificity:

human, mouse, rat

### Cited Species:

human

### Positive Controls:

**WB** : HeLa cells, COLO 320 cells, HepG2 cells, human kidney tissue, human spleen tissue, K-562 cells, L02 cells, NIH/3T3 cells

**IP** : L02 cells,

**IHC** : human kidney tissue,

**Note-IHC: suggested antigen retrieval with TE buffer pH 9.0; (\*) Alternatively, antigen retrieval may be performed with citrate buffer pH 6.0**

## Background Information

PISD(Phosphatidylserine decarboxylase proenzyme) belongs to the phosphatidylserine decarboxylase family. It contains a conserved LGST motif that functions as an autocatalytic cleavage site where the proenzyme is split into mature alpha and beta subunits. It has 2 isoforms produced by alternative splicing. This antibody is specific to PISD. The sequence correspond to the beta isoform.

## Notable Publications

Author	Pubmed ID	Journal	Application
Ayesh K Seneviratne	30930145	Cell Stem Cell	WB
Yawen Ma	33675985	Cancer Lett	WB
Yaoyao Song	36589750	Front Cell Dev Biol	

## Storage

### Storage:

Store at -20°C. Stable for one year after shipment.

### Storage Buffer:

PBS with 0.02% sodium azide and 50% glycerol pH 7.3.

Aliquoting is unnecessary for -20°C storage

\*\*\* 20ul sizes contain 0.1% BSA

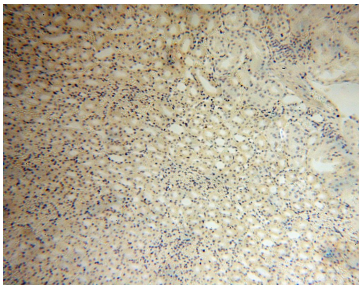
For technical support and original validation data for this product please contact:

T: 1 (888) 4PTGLAB (1-888-478-4522) (toll free in USA), or 1(312) 455-8498 (outside USA)

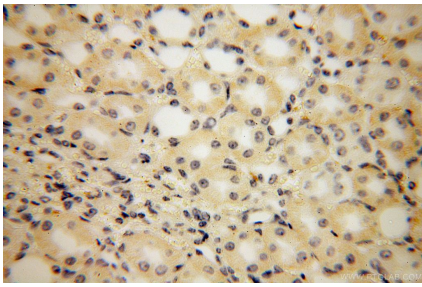
E: [proteintech@ptglab.com](mailto:proteintech@ptglab.com)  
W: [ptglab.com](http://ptglab.com)

This product is exclusively available under Proteintech Group brand and is not available to purchase from any other manufacturer.

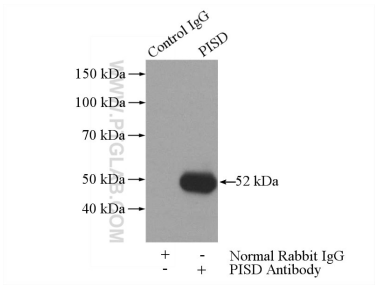
Selected Validation Data



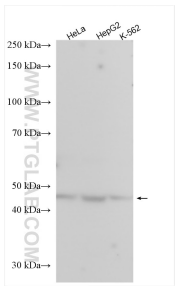
Immunohistochemical analysis of paraffin-embedded human kidney using 16401-1-AP (PISD antibody) at dilution of 1:100 (under 10x lens).



Immunohistochemical analysis of paraffin-embedded human kidney using 16401-1-AP (PISD antibody) at dilution of 1:100 (under 40x lens).



IP result of anti-PISD (IP:16401-1-AP, 3ug; Detection:16401-1-AP 1:500) with L02 cells lysate 1400ug.



Various lysates were subjected to SDS PAGE followed by western blot with 16401-1-AP (PISD antibody) at dilution of 1:4000 incubated at room temperature for 1.5 hours.