

For Research Use Only

# Biglycan Polyclonal antibody

Catalog Number: 16409-1-AP

Featured Product

28 Publications



## Basic Information

### Catalog Number:

16409-1-AP

### Size:

150ul, Concentration: 600 ug/ml by Nanodrop;

### Source:

Rabbit

### Isotype:

IgG

### Immunogen Catalog Number:

AG0683

### GenBank Accession Number:

BC004244

### GeneID (NCBI):

633

### UNIPROT ID:

P21810

### Full Name:

biglycan

### Calculated MW:

42 kDa

### Observed MW:

40-48 kDa

### Purification Method:

Antigen affinity purification

### Recommended Dilutions:

WB 1:1000-1:5000

IHC 1:200-1:4000

IF/ICC 1:200-1:800

## Applications

### Tested Applications:

WB, IHC, IF/ICC, ELISA

### Cited Applications:

WB, IHC, IF, Cell treatment

### Species Specificity:

human, mouse, rat, pig

### Cited Species:

human, mouse, rat, canine

**Note-IHC: suggested antigen retrieval with TE buffer pH 9.0; (\*) Alternatively, antigen retrieval may be performed with citrate buffer pH 6.0**

### Positive Controls:

**WB:** COLO 320 cells, HeLa cells, HepG2 cells, mouse skeletal muscle tissue, pig cartilage tissue

**IHC:** human lung cancer tissue, human colon cancer tissue, human kidney tissue, human liver tissue, human liver cancer tissue, human lung tissue, human renal cell carcinoma tissue, human stomach cancer tissue, mouse lung tissue

**IF/ICC:** HepG2 cells,

## Background Information

Biglycan is a member of the small leucine-rich proteoglycan (SLRP) family (PMID: 18463092). It consists of a core protein of 42 kDa containing leucine-rich repeats (LRRs), to which two chondroitin/dermatan sulfate side chains are covalently bound (PMID: 2212616; 10383378). The tissue-specific chondroitin- or dermatan-sulfate glycosaminoglycan chains of biglycan are attached to amino acid residues at the N-terminus of the core protein (PMID: 22821552). Biglycan is a ubiquitous component of connective tissue matrix and may act as a signaling molecule (PMID: 22821552). Upregulation of biglycan has been reported in multiple types of solid cancer (PMID: 32194659).

## Notable Publications

Author	Pubmed ID	Journal	Application
Mengying Wang	31478096	Glycoconj J	WB
Jun Furumido	36305810	Int J Urol	IHC
Yueyan Li	32969194	Proteomics Clin Appl	WB

## Storage

### Storage:

Store at -20°C. Stable for one year after shipment.

### Storage Buffer:

PBS with 0.02% sodium azide and 50% glycerol pH 7.3.

Aliquoting is unnecessary for -20°C storage

\*\*\* 20ul sizes contain 0.1% BSA

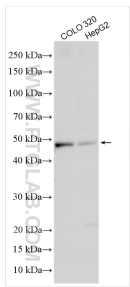
For technical support and original validation data for this product please contact:

T: 1 (888) 4PTGLAB (1-888-478-4522) (toll free in USA), or 1(312) 455-8498 (outside USA)

E: [proteintech@ptglab.com](mailto:proteintech@ptglab.com)  
W: [ptglab.com](http://ptglab.com)

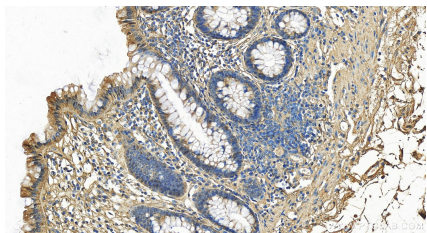
This product is exclusively available under Proteintech Group brand and is not available to purchase from any other manufacturer.

Selected Validation Data

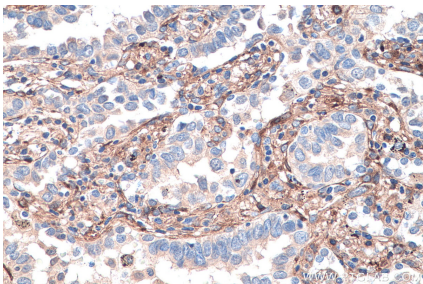


Various lysates were subjected to SDS PAGE followed by western blot with 16409-1-AP (Biglycan antibody) at dilution of 1:2500 incubated at room temperature for 1.5 hours.

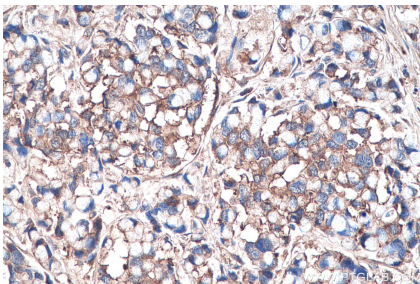
Immunohistochemical analysis of paraffin-embedded human liver tissue slide using 16409-1-AP (Biglycan antibody) at dilution of 1:4000 (under 40x lens). Heat mediated antigen retrieval with Tris-EDTA buffer (pH 9.0).



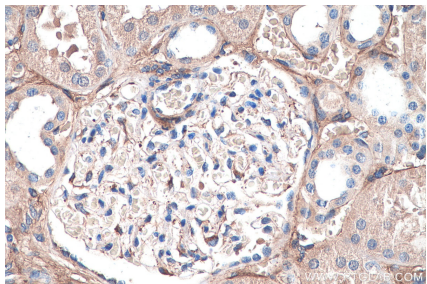
Immunohistochemical analysis of paraffin-embedded human normal colon slide using 16409-1-AP (Biglycan antibody) at dilution of 1:200 (under 20x lens). Heat mediated antigen retrieval with Tris-EDTA buffer (pH 9.0).



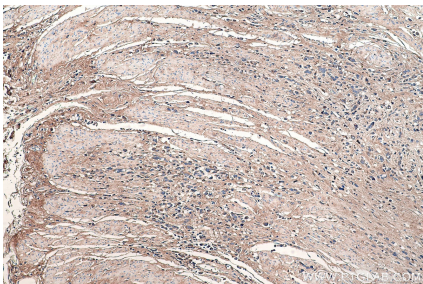
Immunohistochemical analysis of paraffin-embedded human lung cancer tissue slide using 16409-1-AP (Biglycan antibody) at dilution of 1:4000 (under 40x lens). Heat mediated antigen retrieval with Tris-EDTA buffer (pH 9.0).



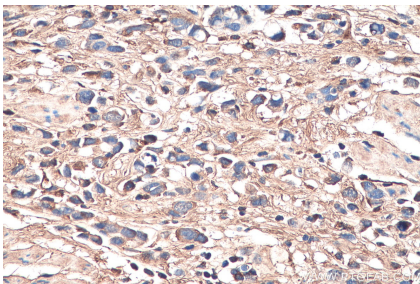
Immunohistochemical analysis of paraffin-embedded human colon cancer tissue slide using 16409-1-AP (Biglycan antibody) at dilution of 1:4000 (under 40x lens). Heat mediated antigen retrieval with Tris-EDTA buffer (pH 9.0).



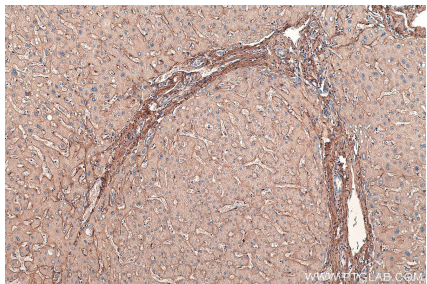
Immunohistochemical analysis of paraffin-embedded human kidney tissue slide using 16409-1-AP (Biglycan antibody) at dilution of 1:4000 (under 40x lens). Heat mediated antigen retrieval with Tris-EDTA buffer (pH 9.0).



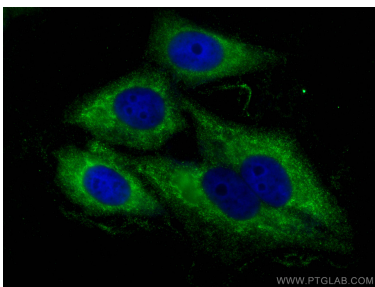
Immunohistochemical analysis of paraffin-embedded human stomach cancer tissue slide using 16409-1-AP (Biglycan antibody) at dilution of 1:4000 (under 10x lens). Heat mediated antigen retrieval with Tris-EDTA buffer (pH 9.0).



Immunohistochemical analysis of paraffin-embedded human stomach cancer tissue slide using 16409-1-AP (Biglycan antibody) at dilution of 1:4000 (under 40x lens). Heat mediated antigen retrieval with Tris-EDTA buffer (pH 9.0).



Immunohistochemical analysis of paraffin-embedded human liver tissue slide using 16409-1-AP (Biglycan antibody) at dilution of 1:4000 (under 10x lens). Heat mediated antigen retrieval with Tris-EDTA buffer (pH 9.0).



Immunofluorescent analysis of (-20°C Ethanol)  
fixed HepG2 cells using Biglycan antibody (16409-  
1-AP) at dilution of 1:400 and CoraLite®488-  
Conjugated Goat Anti-Rabbit IgG(H+L).