

For Research Use Only

ENO3 Polyclonal antibody

Catalog Number: 16421-1-AP

3 Publications



Basic Information

Catalog Number:

16421-1-AP

Size:

150ul, Concentration: 400 ug/ml by Nanodrop and 233 ug/ml by Bradford method using BSA as the standard;

Source:

Rabbit

Isotype:

IgG

Immunogen Catalog Number:

AG9613

GenBank Accession Number:

BC017249

GeneID (NCBI):

2027

UNIPROT ID:

P13929

Full Name:

enolase 3 (beta, muscle)

Calculated MW:

434 aa, 47 kDa

Observed MW:

47 kDa

Purification Method:

Antigen affinity purification

Recommended Dilutions:

WB 1:500-1:3000

IF/ICC 1:200-1:800

Applications

Tested Applications:

WB, IF/ICC, ELISA

Cited Applications:

WB

Species Specificity:

human, mouse

Cited Species:

human, mouse, rat

Positive Controls:

WB : human skeletal muscle tissue, human brain tissue

IF/ICC : HeLa cells,

Background Information

ENO3, also named as MSE, belongs to the enolase family. It appears to have a function in striated muscle development and regeneration. Defects in ENO3 are the cause of glycogen storage disease type 13 (GSD13).

Notable Publications

Author	Pubmed ID	Journal	Application
Deanna L Plubell	28325852	Mol Cell Proteomics	WB
Choi Minji M	23548559	Cell Physiol Biochem	WB
Zhilong Zheng	37211156	Biochim Biophys Acta Mol Cell Res	WB

Storage

Storage:

Store at -20°C. Stable for one year after shipment.

Storage Buffer:

PBS with 0.02% sodium azide and 50% glycerol pH 7.3.

Aliquoting is unnecessary for -20°C storage

*** 20ul sizes contain 0.1% BSA

For technical support and original validation data for this product please contact:

T: 1 (888) 4PTGLAB (1-888-478-4522) (toll free in USA), or 1(312) 455-8498 (outside USA)

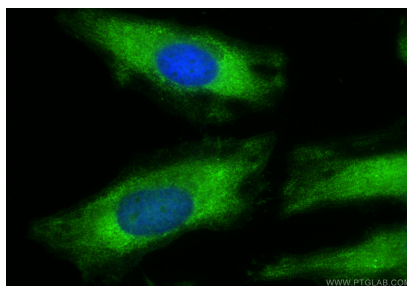
E: proteintech@ptglab.com
W: ptglab.com

This product is exclusively available under Proteintech Group brand and is not available to purchase from any other manufacturer.

Selected Validation Data



human skeletal muscle tissue were subjected to SDS PAGE followed by western blot with 16421-1-AP (ENO3 antibody) at dilution of 1:500 incubated at room temperature for 1.5 hours.



Immunofluorescent analysis of (-20°C Ethanol) fixed HeLa cells using ENO3 antibody (16421-1-AP) at dilution of 1:400 and CoraLite®488-Conjugated Goat Anti-Rabbit IgG(H+L) (SA00013-2).