

For Research Use Only

PAN2 Polyclonal antibody

Catalog Number: 16427-1-AP

Featured Product

7 Publications



Basic Information

Catalog Number:

16427-1-AP

Size:

150ul, Concentration: 400 ug/ml by Nanodrop and 267 ug/ml by Bradford method using BSA as the standard;

Source:

Rabbit

Isotype:

IgG

Immunogen Catalog Number:

AG9670

GenBank Accession Number:

BC024043

GeneID (NCBI):

9924

UNIPROT ID:

Q504Q3

Full Name:

PAN2 poly(A) specific ribonuclease subunit homolog (S. cerevisiae)

Calculated MW:

1198 aa, 135 kDa

Observed MW:

135 kDa

Purification Method:

Antigen affinity purification

Recommended Dilutions:

WB 1:500-1:1000

IHC 1:200-1:800

IF/ICC 1:200-1:800

Applications

Tested Applications:

WB, IHC, IF/ICC, ELISA

Cited Applications:

WB, IHC, IF, IP

Species Specificity:

human, mouse, rat

Cited Species:

human, mouse

Note-IHC: suggested antigen retrieval with TE buffer pH 9.0; (*) Alternatively, antigen retrieval may be performed with citrate buffer pH 6.0

Positive Controls:

WB: NIH/3T3 cells, HepG2 cells

IHC: mouse heart tissue, human heart tissue, human kidney tissue, human placenta tissue, human testis tissue, human brain tissue, human liver tissue, human spleen tissue

IF/ICC: NIH/3T3 cells,

Notable Publications

Author	Pubmed ID	Journal	Application
Rebecca L Kow	33184027	Neurobiol Dis	IF
Shangda Yang	29599486	Nat Commun	WB,IHC,IF
Stefanie Jonas	24880343	Nat Struct Mol Biol	WB

Storage

Storage:

Store at -20°C. Stable for one year after shipment.

Storage Buffer:

PBS with 0.02% sodium azide and 50% glycerol pH 7.3.

Aliquoting is unnecessary for -20°C storage

*** 20ul sizes contain 0.1% BSA

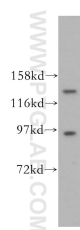
For technical support and original validation data for this product please contact:

T: 1 (888) 4PTGLAB (1-888-478-4522) (toll free in USA), or 1(312) 455-8498 (outside USA)

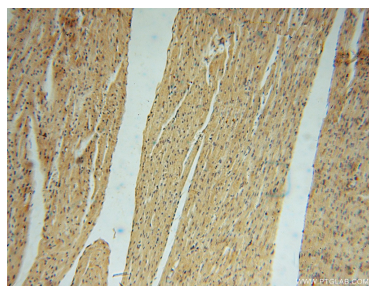
E: proteintech@ptglab.com
W: ptglab.com

This product is exclusively available under Proteintech Group brand and is not available to purchase from any other manufacturer.

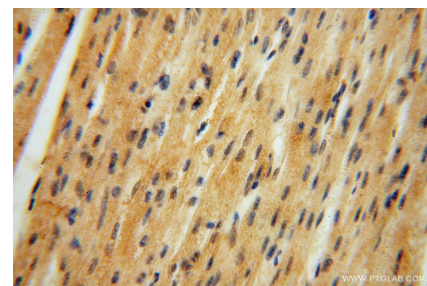
Selected Validation Data



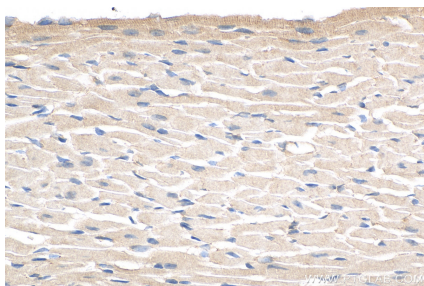
NIH/3T3 cells were subjected to SDS PAGE followed by western blot with 16427-1-AP (PAN2 antibody) at dilution of 1:300 incubated at room temperature for 1.5 hours.



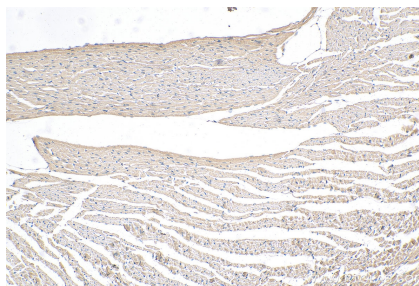
Immunohistochemical analysis of paraffin-embedded human heart using 16427-1-AP (PAN2 antibody) at dilution of 1:50 (under 10x lens).



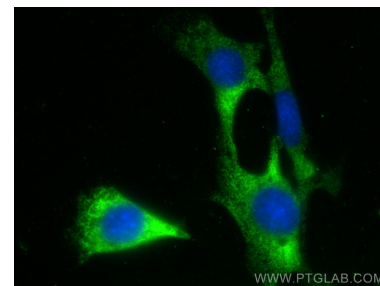
Immunohistochemical analysis of paraffin-embedded human heart using 16427-1-AP (PAN2 antibody) at dilution of 1:50 (under 40x lens).



Immunohistochemical analysis of paraffin-embedded mouse heart tissue slide using 16427-1-AP (PAN2 antibody) at dilution of 1:400 (under 40x lens). Heat mediated antigen retrieval with Tris-EDTA buffer (pH 9.0).



Immunohistochemical analysis of paraffin-embedded mouse heart tissue slide using 16427-1-AP (PAN2 antibody) at dilution of 1:400 (under 10x lens). Heat mediated antigen retrieval with Tris-EDTA buffer (pH 9.0).



Immunofluorescent analysis of (-20°C Ethanol) fixed NIH/3T3 cells using PAN2 antibody (16427-1-AP) at dilution of 1:400 and Coralite®488-Conjugated Goat Anti-Rabbit IgG(H+L) (SA00013-2).