

For Research Use Only

MRPS5 Polyclonal antibody

Catalog Number: 16428-1-AP

Featured Product

2 Publications



Basic Information

Catalog Number:

16428-1-AP

Size:

150ul, Concentration: 400 ug/ml by Nanodrop and 240 ug/ml by Bradford method using BSA as the standard;

Source:

Rabbit

Isotype:

IgG

Immunogen Catalog Number:

AG9672

GenBank Accession Number:

BC014172

GeneID (NCBI):

64969

UNIPROT ID:

P82675

Full Name:

mitochondrial ribosomal protein S5

Calculated MW:

430 aa, 48 kDa

Observed MW:

38-42 kDa

Purification Method:

Antigen affinity purification

Recommended Dilutions:

WB: 1:500-1:3000

IHC: 1:50-1:500

Applications

Tested Applications:

WB, IHC, ELISA

Cited Applications:

WB, IHC

Species Specificity:

human

Cited Species:

human

Note-IHC: suggested antigen retrieval with TE buffer pH 9.0; (*) Alternatively, antigen retrieval may be performed with citrate buffer pH 6.0

Positive Controls:

WB : HEK-293 cells, HeLa cells, HepG2 cells, Jurkat cells

IHC : human kidney tissue,

Notable Publications

Author	Pubmed ID	Journal	Application
Elena Lavdovskaia	38992089	Nat Struct Mol Biol	WB
Yiwen Liu	36989676	Transl Oncol	IHC

Storage

Storage:

Store at -20°C. Stable for one year after shipment.

Storage Buffer:

PBS with 0.02% sodium azide and 50% glycerol, pH7.3

Aliquoting is unnecessary for -20°C storage

*** 20ul sizes contain 0.1% BSA

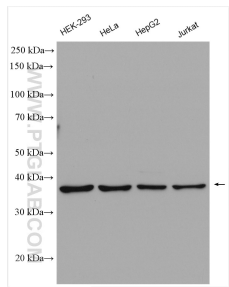
For technical support and original validation data for this product please contact:

T: 1 (888) 4PTGLAB (1-888-478-4522) (toll free in USA), or 1(312) 455-8498 (outside USA)

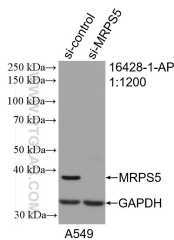
E: proteintech@ptglab.com
W: ptglab.com

This product is exclusively available under Proteintech Group brand and is not available to purchase from any other manufacturer.

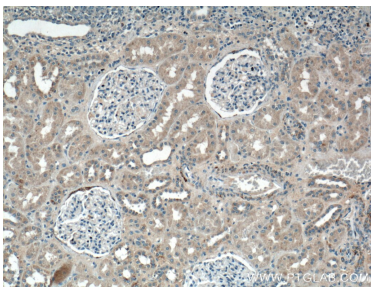
Selected Validation Data



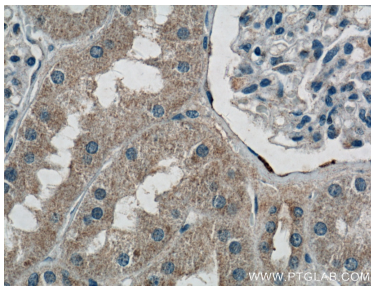
HEK-293 cells were subjected to SDS PAGE followed by western blot with 16428-1-AP (MRP5 antibody) at dilution of 1:1500 incubated at room temperature for 1.5 hours.



WB result of MRP5 antibody (16428-1-AP; 1:1200; incubated at room temperature for 1.5 hours) with sh-Control and sh-MRP5 transfected HeLa cells.



Immunohistochemical analysis of paraffin-embedded human kidney tissue slide using 16428-1-AP (MRP5 antibody) at dilution of 1:200 (under 10x lens).



Immunohistochemical analysis of paraffin-embedded human kidney tissue slide using 16428-1-AP (MRP5 antibody) at dilution of 1:200 (under 40x lens).