

For Research Use Only

DLD Polyclonal antibody

Catalog Number: 16431-1-AP

Featured Product

33 Publications



Basic Information

Catalog Number:

16431-1-AP

Size:

150ul, Concentration: 500 ug/ml by Nanodrop;

Source:

Rabbit

Isotype:

IgG

Immunogen Catalog Number:

AG9729

GenBank Accession Number:

BC018696

GeneID (NCBI):

1738

UNIPROT ID:

P09622

Full Name:

dihydrolipoamide dehydrogenase

Calculated MW:

509 aa, 54 kDa

Observed MW:

56 kDa

Purification Method:

Antigen affinity purification

Recommended Dilutions:

WB: 1:10000-1:500000

IP: 0.5-4.0 ug for 1.0-3.0 mg of total protein lysate

IHC: 1:500-1:2000

IF/ICC: 1:50-1:500

Applications

Tested Applications:

WB, IHC, IF/ICC, IP, ELISA

Cited Applications:

WB, IHC, IF, IP

Species Specificity:

human, mouse, rat

Cited Species:

human, mouse, rat

Note-IHC: suggested antigen retrieval with TE buffer pH 9.0; (*) Alternatively, antigen retrieval may be performed with citrate buffer pH 6.0

Positive Controls:

WB: HepG2 cells, HeLa cells, human brain tissue, human liver tissue, L02 cells, mouse heart tissue, mouse liver tissue, rat liver tissue, rat heart tissue

IP: mouse liver tissue,

IHC: human liver cancer tissue, human heart tissue, human kidney tissue, human testis tissue, human liver tissue

IF/ICC: HepG2 cells,

Background Information

DLD(Dihydrolipoamide dehydrogenase, mitochondrial) is also named as GCSL, LAD, PHE3 and belongs to the class-I pyridine nucleotide-disulfide oxidoreductase family. It catalyzes the oxidation of dihydrolipoamide, hE3 uses two molecules: non-covalently bound FAD and a transiently bound substrate, NAD⁺. DLD is involved in the hyperactivation of spermatazoa during capacitation and in the spermatazoal acrosome reaction.

Notable Publications

Author	Pubmed ID	Journal	Application
Rosalba Carozzo	25251739	Mitochondrion	WB
McKenzie Patrick	36443523	Nat Metab	WB
Yanan Wang	36433955	Nat Commun	

Storage

Storage:

Store at -20°C. Stable for one year after shipment.

Storage Buffer:

PBS with 0.02% sodium azide and 50% glycerol, pH7.3

Aliquoting is unnecessary for -20°C storage

*** 20ul sizes contain 0.1% BSA

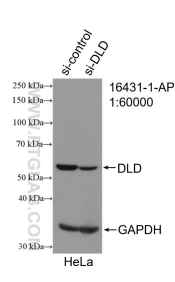
For technical support and original validation data for this product please contact:

T: 1 (888) 4PTGLAB (1-888-478-4522) (toll free in USA), or 1(312) 455-8498 (outside USA)

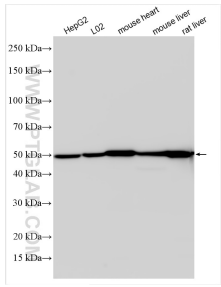
E: proteintech@ptglab.com
W: ptglab.com

This product is exclusively available under Proteintech Group brand and is not available to purchase from any other manufacturer.

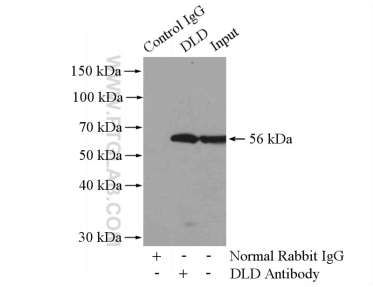
Selected Validation Data



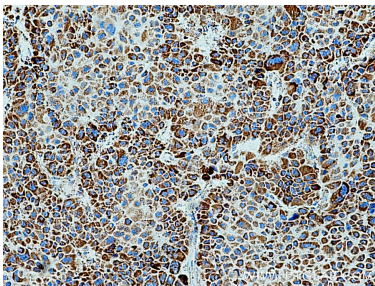
WB result of DLD antibody (16431-1-AP; 1:60000; incubated at room temperature for 1.5 hours) with sh-Control and sh-DLD transfected HeLa cells.



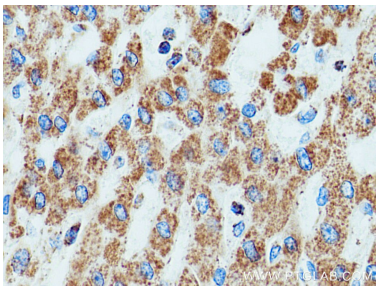
Various lysates were subjected to SDS PAGE followed by western blot with 16431-1-AP (DLD antibody) at dilution of 1:50000 incubated at room temperature for 1.5 hours.



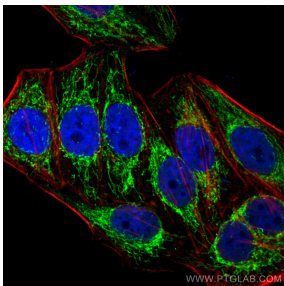
IP result of anti-DLD (IP:16431-1-AP, 4ug; Detection:16431-1-AP 1:1000) with mouse liver tissue lysate 6000ug.



Immunohistochemical analysis of paraffin-embedded human liver cancer tissue slide using 16431-1-AP (DLD antibody) at dilution of 1:1000 (under 10x lens). Heat mediated antigen retrieval with Tris-EDTA buffer (pH 9.0).



Immunohistochemical analysis of paraffin-embedded human liver cancer tissue slide using 16431-1-AP (DLD antibody) at dilution of 1:1000 (under 40x lens). Heat mediated antigen retrieval with Tris-EDTA buffer (pH 9.0).



Immunofluorescent analysis of (4% PFA) fixed HepG2 cells using DLD antibody (16431-1-AP) at dilution of 1:200 and Multi-rAb CoraLite® Plus 488-Goat Anti-Rabbit Recombinant Secondary Antibody (H+L) (RGAR002), CL594-Phalloidin (red).