

For Research Use Only

# ADH4 Polyclonal antibody

Catalog Number: 16474-1-AP

Featured Product

4 Publications



## Basic Information

Catalog Number:

16474-1-AP

Size:

150ul, Concentration: 350 ug/ml by Nanodrop;

Source:

Rabbit

Isotype:

IgG

Immunogen Catalog Number:

AG9568

GenBank Accession Number:

BC022319

GeneID (NCBI):

127

UNIPROT ID:

P08319

Full Name:

alcohol dehydrogenase 4 (class II), pi polypeptide

Calculated MW:

380 aa, 40 kDa

Observed MW:

43 kDa

Purification Method:

Antigen affinity purification

Recommended Dilutions:

WB 1:500-1:2000

IHC 1:50-1:500

## Applications

Tested Applications:

WB, IHC, ELISA

Cited Applications:

WB, IHC

Species Specificity:

human, mouse, rat

Cited Species:

human

**Note-IHC: suggested antigen retrieval with TE buffer pH 9.0; (\*) Alternatively, antigen retrieval may be performed with citrate buffer pH 6.0**

Positive Controls:

WB : HepG2 cells, mouse brain tissue, HeLa cells, mouse liver tissue, rat liver tissue

IHC : human kidney tissue, human heart tissue

## Background Information

This gene encodes the class II alcohol dehydrogenase 4 pi subunit, which is a member of the alcohol dehydrogenase family. Members of this enzyme family metabolize a wide variety of substrates, including ethanol, retinol, other aliphatic alcohols, hydroxysteroids, and lipid peroxidation products. Class II alcohol dehydrogenase is a homodimer composed of 2 pi subunits. ADH4 plays a critical role in alcoholism development and alcohol toxicology and is also associated with the development of esophageal cancer (PMID:33556337, 26039424, 24051444, 22147505).

## Notable Publications

Author	Pubmed ID	Journal	Application
Yangying Zhou	36341373	Front Immunol	IHC
Tingbo Ye	35677150	Front Oncol	IHC
Rei Sato	39472076	Drug Metab Dispos	WB

## Storage

Storage:

Store at -20°C. Stable for one year after shipment.

Storage Buffer:

PBS with 0.02% sodium azide and 50% glycerol pH 7.3.

Aliquoting is unnecessary for -20°C storage

\*\*\* 20ul sizes contain 0.1% BSA

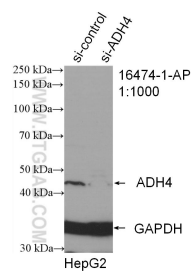
For technical support and original validation data for this product please contact:

T: 1 (888) 4PTGLAB (1-888-478-4522) (toll free in USA), or 1(312) 455-8498 (outside USA)

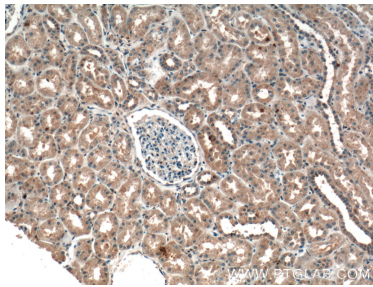
E: [proteintech@ptglab.com](mailto:proteintech@ptglab.com)  
W: [ptglab.com](http://ptglab.com)

This product is exclusively available under Proteintech Group brand and is not available to purchase from any other manufacturer.

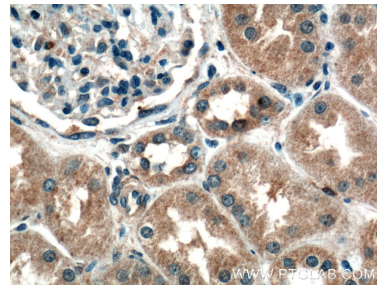
Selected Validation Data



WB result of ADH4 antibody (16474-1-AP; 1:1000; incubated at room temperature for 1.5 hours) with sh-Control and sh-ADH4 transfected HepG2 cells.



Immunohistochemical analysis of paraffin-embedded human kidney tissue slide using 16474-1-AP (ADH4 Antibody) at dilution of 1:200 (under 10x lens).



Immunohistochemical analysis of paraffin-embedded human kidney tissue slide using 16474-1-AP (ADH4 Antibody) at dilution of 1:200 (under 40x lens).