

For Research Use Only

RPL31 Polyclonal antibody

Catalog Number: 16497-1-AP

Featured Product

3 Publications



Basic Information

Catalog Number:

16497-1-AP

Size:

150ul, Concentration: 240 ug/ml by Nanodrop and 133 ug/ml by Bradford method using BSA as the standard;

Source:

Rabbit

Isotype:

IgG

Immunogen Catalog Number:

AG9648

GenBank Accession Number:

BC017343

GeneID (NCBI):

6160

UNIPROT ID:

P62899

Full Name:

ribosomal protein L31

Calculated MW:

125 aa, 14 kDa

Observed MW:

14 kDa

Purification Method:

Antigen affinity purification

Recommended Dilutions:

WB 1:500-1:1000

IF/ICC 1:50-1:500

Applications

Tested Applications:

WB, IF/ICC, ELISA

Cited Applications:

WB, IF

Species Specificity:

human, mouse, rat

Cited Species:

human, mouse

Positive Controls:

WB : HepG2 cells, mouse liver tissue, NIH/3T3 cells

IF/ICC : HepG2 cells,

Background Information

The mammalian ribosome comprises 79 ribosomal proteins and four rRNAs, which combine in equimolar ratios to form the small (40S) and large (60S) subunits. Ribosome proteins are a direct and critical target of the PI3K pathway in promoting growth.[PMID:15289434]. Ribosomal protein L31 gene is a component of the 60S large ribosomal subunit encoded by RPL31 gene, while ribosomal protein L31 (RPL31) is an important constituent of peptidyltransferase center [PMID:22714919].

Notable Publications

Author	Pubmed ID	Journal	Application
Long Jiang	28502657	Curr Biol	WB
Rui Guo	38341271	J Med Genet	IF
Magdalena Wolczyk	37123244	iScience	WB

Storage

Storage:

Store at -20°C. Stable for one year after shipment.

Storage Buffer:

PBS with 0.02% sodium azide and 50% glycerol pH 7.3.

Aliquoting is unnecessary for -20°C storage

*** 20ul sizes contain 0.1% BSA

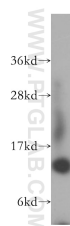
For technical support and original validation data for this product please contact:

T: 1 (888) 4PTGLAB (1-888-478-4522) (toll free in USA), or 1(312) 455-8498 (outside USA)

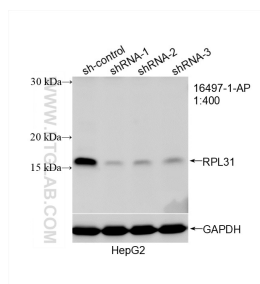
E: proteintech@ptglab.com
W: ptglab.com

This product is exclusively available under Proteintech Group brand and is not available to purchase from any other manufacturer.

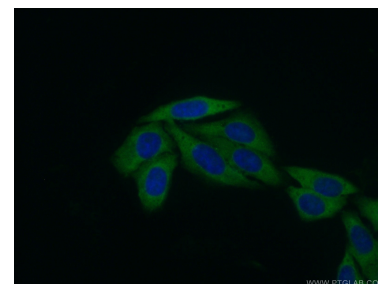
Selected Validation Data



HepG2 cells were subjected to SDS PAGE followed by western blot with 16497-1-AP (RPL31 antibody) at dilution of 1:300 incubated at room temperature for 1.5 hours.



WB result of RPL31 antibody (16497-1-AP; 1:400; incubated at room temperature for 1.5 hours) with sh-Control and sh-RPL31 transfected HepG2 cells.



Immunofluorescent analysis of (10% Formaldehyde) fixed HepG2 cells using 16497-1-AP (RPL31 antibody) at dilution of 1:50 and Alexa Fluor 488-conjugated Goat Anti-Rabbit IgG(H+L).