

For Research Use Only

# SPG11 Polyclonal ANTIBODY



Catalog Number: 16555-1-AP

Featured Product

4 Publications

## Basic Information

Catalog Number:  
16555-1-AP

Size:  
40 µg/150 µl

Source:  
Rabbit

Isotype:  
IgG

Purification Method:  
Antigen affinity purification  
Immunogen Catalog Number:  
AC9769

GenBank Accession Number:  
BC024161

GeneID (NCBI):  
80208

Full Name:  
spastic paraplegia 11 (autosomal recessive)

Calculated MW:  
2443aa, 279 kDa

Observed MW:

Recommended Dilutions:  
IHC 1:50-1:500

## Applications

Tested Applications:  
ELISA, IHC

Cited Applications:  
WB

Species Specificity:  
human,mouse,rat

Cited Species:  
human, mouse

Positive Controls:

IHC : human liver tissue;

## Background Information

### Notable Publications

Author	Pubmed ID	Journal	Application
Jaerak Chang	25365221	J Clin Invest	WB
Benoît Renvoisé	24999486	Ann Clin Transl Neurol	WB
Julien Branchu	28237315	Neurobiol Dis	WB

## Storage

Storage:  
Store at -20°C. Stable for one year after shipment.  
Storage Buffer:  
PBS with 0.1% sodium azide and 50% glycerol pH 7.3.  
Aliquoting is unnecessary for -20°C storage

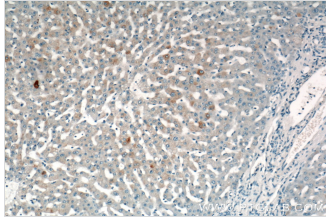
For technical support and original validation data for this product please contact:

T: 1 (888) 4PTGLAB (1-888-478-4522) (toll free in USA), or 1(312) 455-8498 (outside USA)

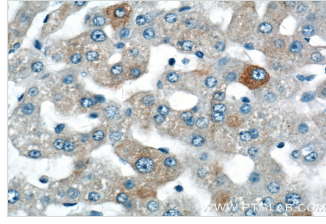
E: [proteintech@ptglab.com](mailto:proteintech@ptglab.com)  
W: [ptglab.com](http://ptglab.com)

This product is exclusively available under Proteintech Group brand and is not available to purchase from any other manufacturer.

## Selected Validation Data



Immunohistochemistry of paraffin-embedded human liver tissue slide using 16555-1-AP (SPG11 Antibody) at dilution of 1:200 (under 10x lens).



Immunohistochemistry of paraffin-embedded human liver tissue slide using 16555-1-AP (SPG11 Antibody) at dilution of 1:200 (under 40x lens).