

For Research Use Only

TMEM11 Polyclonal antibody

Catalog Number: 16564-1-AP

Featured Product

3 Publications



Basic Information

Catalog Number:

16564-1-AP

Size:

150ul , Concentration: 450 ug/ml by Nanodrop;

Source:

Rabbit

Isotype:

IgG

Immunogen Catalog Number:

AG9839

GenBank Accession Number:

BC020815

GeneID (NCBI):

8834

UNIPROT ID:

P17152

Full Name:

transmembrane protein 11

Calculated MW:

192 aa, 22 kDa

Observed MW:

22 kDa

Purification Method:

Antigen affinity purification

Recommended Dilutions:

WB 1:500-1:2000

Applications

Tested Applications:

WB, ELISA

Cited Applications:

WB

Species Specificity:

human, mouse, rat

Cited Species:

human

Positive Controls:

WB : human placenta tissue, mouse placenta tissue

Background Information

TMEM11, also named as C17orf35 and PM1, belongs to the TMEM11 family. TMEM11 is a mitochondrial inner-membrane protein facing the matrix. It regulates mitochondrial morphogenesis independently of the DRP1/MFN fission/fusion pathways.(PMID:21274005)

Notable Publications

Author	Pubmed ID	Journal	Application
Virginia Guarani	25997101	Elife	WB
Mehmet Oguz Gok	36795401	J Cell Biol	WB
Rival Thomas T	21274005	EMBO Rep	WB

Storage

Storage:

Store at -20°C. Stable for one year after shipment.

Storage Buffer:

PBS with 0.02% sodium azide and 50% glycerol pH 7.3.

Aliquoting is unnecessary for -20°C storage

*** 20ul sizes contain 0.1% BSA

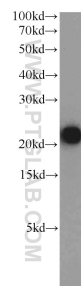
For technical support and original validation data for this product please contact:

T: 1 (888) 4PTGLAB (1-888-478-4522) (toll free in USA), or 1(312) 455-8498 (outside USA)

E: proteintech@ptglab.com
W: ptglab.com

This product is exclusively available under Proteintech Group brand and is not available to purchase from any other manufacturer.

Selected Validation Data



human placenta tissue were subjected to SDS PAGE followed by western blot with 16564-1-AP (TMEM11 antibody) at dilution of 1:1000 incubated at room temperature for 1.5 hours.