

For Research Use Only

PPP2R2A Polyclonal antibody

Catalog Number: 16569-1-AP

4 Publications



Basic Information

Catalog Number:

16569-1-AP

Size:

150ul, Concentration: 500 ug/ml by Nanodrop;

Source:

Rabbit

Isotype:

IgG

Immunogen Catalog Number:

AG9851

GenBank Accession Number:

BC041071

GeneID (NCBI):

5520

UNIPROT ID:

P63151

Full Name:

protein phosphatase 2 (formerly 2A), regulatory subunit B, alpha isoform

Calculated MW:

477 aa, 52 kDa

Observed MW:

50 kDa

Purification Method:

Antigen affinity purification

Recommended Dilutions:

WB 1:500-1:1000

IHC 1:200-1:800

IF/ICC 1:200-1:800

Applications

Tested Applications:

WB, IHC, IF/ICC, ELISA

Cited Applications:

WB

Species Specificity:

human, mouse, rat

Cited Species:

human, mouse

Note-IHC: suggested antigen retrieval with TE buffer pH 9.0; (*) Alternatively, antigen retrieval may be performed with citrate buffer pH 6.0

Positive Controls:

WB : K-562 cells, MCF-7 cells, C6 cells, mouse brain tissue, rat brain tissue

IHC : mouse brain tissue,

IF/ICC : A431 cells,

Background Information

The serine/threonine protein phosphatase 2A (PP2A) is a master regulator of the complex cellular signaling that occurs during all stages of mammalian development. PPP2R2A, also known as B55A or PR55A, is a regulatory subunit of PP2A expressed in an Akt-dependent manner in epidermis during barrier formation. PPP2R2A participates in the negative control of cell growth and division. PPP2R2A has been proved to be a tumor suppressor that can inhibit the proliferation of a variety of cancer cells, such as prostate cancer cells (PMID: 21872824).

Notable Publications

Author	Pubmed ID	Journal	Application
Wen-Ting Hu	36305233	EMBO Rep	WB
Wei Deng	25833338	Cell Physiol Biochem	WB
Yan Liu	38734666	Cell Div	WB

Storage

Storage:

Store at -20°C. Stable for one year after shipment.

Storage Buffer:

PBS with 0.02% sodium azide and 50% glycerol pH 7.3.

Aliquoting is unnecessary for -20°C storage

*** 20ul sizes contain 0.1% BSA

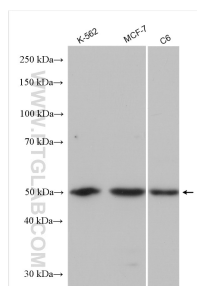
For technical support and original validation data for this product please contact:

T: 1 (888) 4PTGLAB (1-888-478-4522) (toll free in USA), or 1(312) 455-8498 (outside USA)

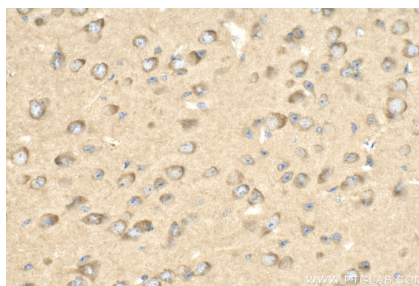
E: proteintech@ptglab.com
W: ptglab.com

This product is exclusively available under Proteintech Group brand and is not available to purchase from any other manufacturer.

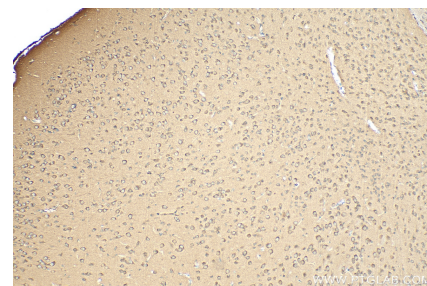
Selected Validation Data



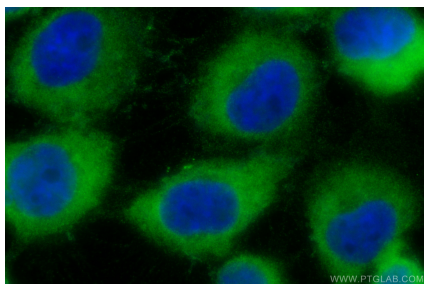
Various lysates were subjected to SDS PAGE followed by western blot with 16569-1-AP (PPP2R2A antibody) at dilution of 1:800 incubated at room temperature for 1.5 hours.



Immunohistochemical analysis of paraffin-embedded mouse brain tissue slide using 16569-1-AP (PPP2R2A antibody) at dilution of 1:400 (under 40x lens). Heat mediated antigen retrieval with Tris-EDTA buffer (pH 9.0).



Immunohistochemical analysis of paraffin-embedded mouse brain tissue slide using 16569-1-AP (PPP2R2A antibody) at dilution of 1:400 (under 10x lens). Heat mediated antigen retrieval with Tris-EDTA buffer (pH 9.0).



Immunofluorescent analysis of (-20°C Methanol) fixed A431 cells using PPP2R2A antibody (16569-1-AP) at dilution of 1:400 and CoraLite®488-Conjugated Goat Anti-Rabbit IgG(H+L).