

For Research Use Only

# CFHR3 Polyclonal antibody

Catalog Number: 16583-1-AP

9 Publications



## Basic Information

### Catalog Number:

16583-1-AP

### Size:

150ul, Concentration: 500 ug/ml by Nanodrop and 280 ug/ml by Bradford method using BSA as the standard;

### Source:

Rabbit

### Isotype:

IgG

### Immunogen Catalog Number:

AG9963

### GenBank Accession Number:

BC058009

### GeneID (NCBI):

10878

### UNIPROT ID:

Q02985

### Full Name:

complement factor H-related 3

### Calculated MW:

330 aa, 37 kDa

### Observed MW:

45-56 kDa

### Purification Method:

Antigen affinity purification

### Recommended Dilutions:

WB 1:1000-1:4000

IP 0.5-4.0 ug for 1.0-3.0 mg of total protein lysate

IHC 1:50-1:500

## Applications

### Tested Applications:

WB, IP, IHC, ELISA

### Cited Applications:

WB, IHC, IF

### Species Specificity:

human, mouse, rat

### Cited Species:

human

**Note-IHC: suggested antigen retrieval with TE buffer pH 9.0; (\*) Alternatively, antigen retrieval may be performed with citrate buffer pH 6.0**

### Positive Controls:

WB : mouse liver tissue, human heart tissue, rat liver tissue

IP : HepG2 cells,

IHC : human liver tissue,

## Background Information

CFHR3, also named as DOWN16, belongs to the complement factor H-related protein family. Expressed by the liver and secreted in plasma, human CFHR3 is composed of five short consensus repeats (SCRs), and it also has a 19-amino acid signal peptide and four N-linked glycosylation sites. It may be involved in complement regulation. Deletion of CFHR1 and CFHR3 genes was found to be associated with decreased risk of age-related macular degeneration (AMD), and with an increased risk of atypical hemolytic-uremic syndrome (aHUS).

## Notable Publications

Author	Pubmed ID	Journal	Application
Zhirui Zeng	35549979	Bioengineered	WB,IHC
Yoko Yoshida	25951460	PLoS One	WB
Swati Arya	29580721	Exp Eye Res	IF

## Storage

### Storage:

Store at -20°C. Stable for one year after shipment.

### Storage Buffer:

PBS with 0.02% sodium azide and 50% glycerol pH 7.3.

Aliquoting is unnecessary for -20°C storage

\*\*\* 20ul sizes contain 0.1% BSA

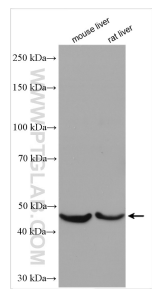
For technical support and original validation data for this product please contact:

T: 1 (888) 4PTGLAB (1-888-478-4522) (toll free in USA), or 1(312) 455-8498 (outside USA)

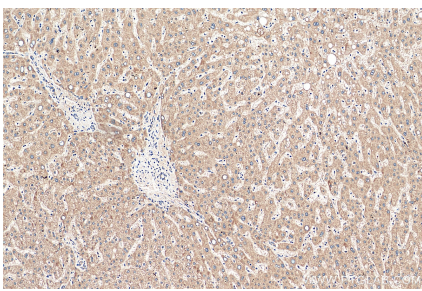
E: [proteintech@ptglab.com](mailto:proteintech@ptglab.com)  
W: [ptglab.com](http://ptglab.com)

This product is exclusively available under Proteintech Group brand and is not available to purchase from any other manufacturer.

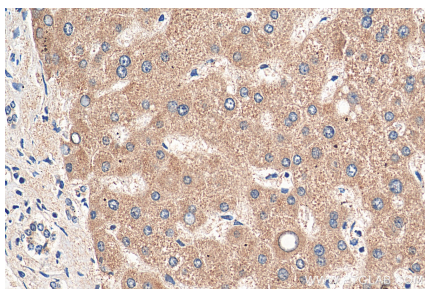
Selected Validation Data



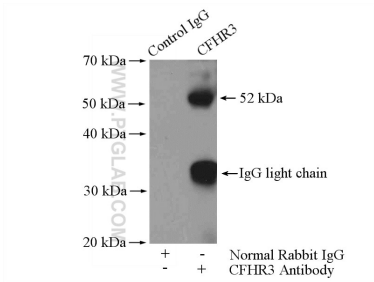
Various lysates were subjected to SDS PAGE followed by western blot with 16583-1-AP (CFHR3 antibody) at dilution of 1:2000 incubated at room temperature for 1.5 hours.



Immunohistochemical analysis of paraffin-embedded human liver tissue slide using 16583-1-AP (CFHR3 antibody) at dilution of 1:200 (under 10x lens). Heat mediated antigen retrieval with Tris-EDTA buffer (pH 9.0).



Immunohistochemical analysis of paraffin-embedded human liver tissue slide using 16583-1-AP (CFHR3 antibody) at dilution of 1:200 (under 40x lens). Heat mediated antigen retrieval with Tris-EDTA buffer (pH 9.0).



IP result of anti-CFHR3 (IP:16583-1-AP, 4ug; Detection:16583-1-AP 1:300) with HepG2 cells lysate 2400ug.