

For Research Use Only

# MRPL3 Polyclonal antibody

Catalog Number: 16584-1-AP **5 Publications**



## Basic Information

<b>Catalog Number:</b> 16584-1-AP	<b>GenBank Accession Number:</b> BC003375	<b>Purification Method:</b> Antigen affinity purification
<b>Size:</b> 150ul , Concentration: 400 µg/ml by Nanodrop;	<b>GeneID (NCBI):</b> 11222	<b>Recommended Dilutions:</b> WB 1:500-1:3000 IHC 1:20-1:200
<b>Source:</b> Rabbit	<b>Full Name:</b> mitochondrial ribosomal protein L3	
<b>Isotype:</b> IgG	<b>Calculated MW:</b> 39 kDa	
<b>Immunogen Catalog Number:</b> AG9970	<b>Observed MW:</b> 39 kDa	

## Applications

<b>Tested Applications:</b> IHC, WB, ELISA	<b>Positive Controls:</b> WB : A431 cells, HeLa cells, HepG2 cells
<b>Cited Applications:</b> WB	<b>IHC :</b> human cervical cancer tissue, human liver cancer tissue
<b>Species Specificity:</b> human, mouse, rat	
<b>Cited Species:</b> human	

**Note-IHC: suggested antigen retrieval with TE buffer pH 9.0; (\*) Alternatively, antigen retrieval may be performed with citrate buffer pH 6.0**

## Background Information

MRPL3, also named as 39S ribosomal protein L3, mitochondrial or RPML3, is a 348 amino acid protein, which belongs to the ribosomal protein L3P family. MRPL3 localizes in the Mitochondrion and has an association with combined oxidative phosphorylation deficiency 9. MRPL3 plays role in the mitochondrial proteins biosynthesis and ribosomal structure and biogenesis.

## Notable Publications

Author	Pubmed ID	Journal	Application
Sven Dennerlein	34969438	Elife	WB
Elena Lavdovskaia	30085210	Nucleic Acids Res	WB
Petra Páleníková	37976156	STAR Protoc	WB

## Storage

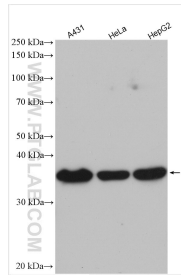
**Storage:**  
Store at -20°C. Stable for one year after shipment.  
**Storage Buffer:**  
PBS with 0.02% sodium azide and 50% glycerol pH 7.3.  
Aliquoting is unnecessary for -20°C storage

**\*\*\* 20ul sizes contain 0.1% BSA**

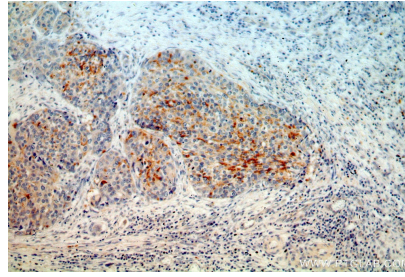
For technical support and original validation data for this product please contact:  
T: 1 (888) 4PTGLAB (1-888-478-4522) (toll free in USA), or 1(312) 455-8498 (outside USA)  
E: proteintech@ptglab.com  
W: ptglab.com

**This product is exclusively available under Proteintech Group brand and is not available to purchase from any other manufacturer.**

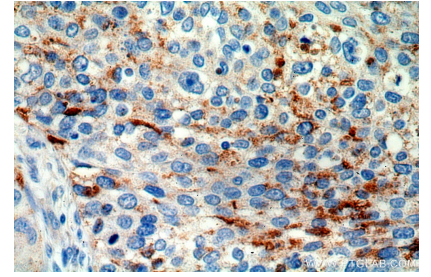
## Selected Validation Data



Various lysates were subjected to SDS PAGE followed by western blot with 16584-1-AP (MRPL3 antibody) at dilution of 1:1500 incubated at room temperature for 1.5 hours.



Immunohistochemical analysis of paraffin-embedded human cervical cancer using 16584-1-AP (MRPL3 antibody) at dilution of 1:100 (under 10x lens).



Immunohistochemical analysis of paraffin-embedded human cervical cancer using 16584-1-AP (MRPL3 antibody) at dilution of 1:100 (under 40x lens).