

For Research Use Only

NUPL2 Polyclonal antibody

Catalog Number: 16587-1-AP

1 Publications



Basic Information

Catalog Number:

16587-1-AP

Size:

150ul, Concentration: 500 ug/ml by Nanodrop and 300 ug/ml by Bradford method using BSA as the standard;

Source:

Rabbit

Isotype:

IgG

Immunogen Catalog Number:

AG8816

GenBank Accession Number:

BC005327

GeneID (NCBI):

11097

UNIPROT ID:

O15504

Full Name:

nucleoporin like 2

Calculated MW:

45 kDa

Observed MW:

45 kDa, 33-36 kDa

Purification Method:

Antigen affinity purification

Recommended Dilutions:

WB 1:500-1:1000

Applications

Tested Applications:

WB, ELISA

Cited Applications:

WB

Species Specificity:

human, mouse, rat

Cited Species:

human

Positive Controls:

WB : HEK-293 cells, human liver tissue, L02 cells

Background Information

NUPL2 (also known as NLP-1, or hCG1) is an ubiquitous nuclear protein containing many phenylalanine-glycine (FG) repeats. As the functional orthologue of the budding yeast Nup42/Rip1 nucleoporin, NUPL2 is required for the export of mRNAs containing poly(A) tails from the nucleus into the cytoplasm (PMID: 10610322). In case of infection by HIV-1, it may participate in the docking of viral Vpr at the nuclear envelope (PMID: 16000379). NUPL2 localizes to the nuclear envelope and could also be mobile within the nucleus. It promotes CRM1-dependent nuclear protein export (PMID: 22250199).

Notable Publications

Author	Pubmed ID	Journal	Application
Maciej Kliszczak	37342232	Front Cell Dev Biol	WB

Storage

Storage:

Store at -20°C. Stable for one year after shipment.

Storage Buffer:

PBS with 0.02% sodium azide and 50% glycerol pH 7.3.

Aliquoting is unnecessary for -20°C storage

*** 20ul sizes contain 0.1% BSA

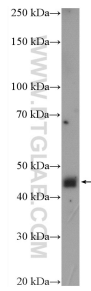
For technical support and original validation data for this product please contact:

T: 1 (888) 4PTGLAB (1-888-478-4522) (toll free in USA), or 1(312) 455-8498 (outside USA)

E: proteintech@ptglab.com
W: ptglab.com

This product is exclusively available under Proteintech Group brand and is not available to purchase from any other manufacturer.

Selected Validation Data



HEK-293 cells were subjected to SDS PAGE followed by western blot with 16587-1-AP (NUPL2 antibody) at dilution of 1:600 incubated at room temperature for 1.5 hours.