

For Research Use Only

NuMA Polyclonal antibody

Catalog Number: 16607-1-AP **1 Publications**



Basic Information

Catalog Number: 16607-1-AP	GenBank Accession Number: BC013023	Purification Method: Antigen affinity purification
Size: 150ul , Concentration: 500 µg/ml by Nanodrop and 300 µg/ml by Bradford method using BSA as the standard;	GeneID (NCBI): 4926	Recommended Dilutions: WB 1:500-1:2000 IHC 1:50-1:500 IF 1:200-1:800
Source: Rabbit	Full Name: nuclear mitotic apparatus protein 1	
Isotype: IgG	Calculated MW: 238 kDa	
Immunogen Catalog Number: AG9815	Observed MW: 238 kDa	

Applications

Tested Applications: IF, IHC, WB, ELISA	Positive Controls: WB : HeLa cells, IHC : human breast cancer tissue, IF : HCT 116 cells,
Cited Applications: IF	
Species Specificity: human, mouse, rat	
Cited Species: pig	
Note-IHC: suggested antigen retrieval with TE buffer pH 9.0; (*) Alternatively, antigen retrieval may be performed with citrate buffer pH 6.0	

Background Information

NUMA1, also named as Nuclear matrix protein-22, is a 2115 amino acid protein, which forms multiarm oligomers by association of C-terminal tail domains. NUMA1 resides in the nuclear matrix during interphase. NUMA1 is a highly abundant component of the nuclear matrix where it may serve a non-mitotic structural role and occupies the majority of the nuclear volume. NUMA1 is required for maintenance and establishment of the mitotic spindle poles during symmetric cell divisions, functioning as a tether linking bulk microtubules of the spindle to centrosomes.

Notable Publications

Author	Pubmed ID	Journal	Application
Carolyn M Remsburg	36751992	J Cell Sci	IF

Storage

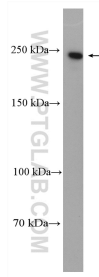
Storage:
Store at -20°C. Stable for one year after shipment.
Storage Buffer:
PBS with 0.02% sodium azide and 50% glycerol pH 7.3.
Aliquoting is unnecessary for -20°C storage

*** 20ul sizes contain 0.1% BSA

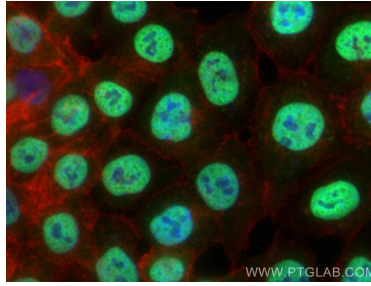
For technical support and original validation data for this product please contact:
T: 1 (888) 4PTGLAB (1-888-478-4522) (toll free in USA), or 1(312) 455-8498 (outside USA)
E: proteintech@ptglab.com
W: ptglab.com

This product is exclusively available under Proteintech Group brand and is not available to purchase from any other manufacturer.

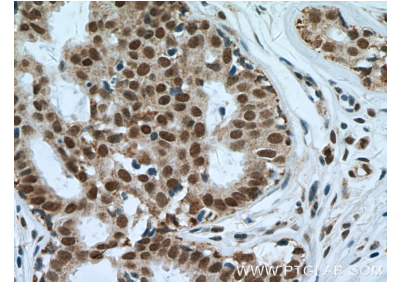
Selected Validation Data



HeLa cells were subjected to SDS PAGE followed by western blot with 16607-1-AP (NuMA antibody) at dilution of 1:1000 incubated at room temperature for 1.5 hours.



Immunofluorescent analysis of (4% PFA) fixed HCT 116 cells using NuMA antibody (16607-1-AP) at dilution of 1:400 and CoraLite@488-Conjugated AffiniPure Goat Anti-Rabbit IgG(H+L), CL594-Phalloidin (red).



Immunohistochemical analysis of paraffin-embedded human breast cancer tissue slide using 16607-1-AP (NuMA antibody at dilution of 1:200 (under 40x lens). Heat mediated antigen retrieval with Tris-EDTA buffer (pH 9.0).