

GRB10 Polyclonal antibody

Catalog Number: 16622-1-AP

Basic Information

Catalog Number: 16622-1-AP	GenBank Accession Number: BC024285	Purification Method: Antigen affinity purification
Size: 150ul , Concentration: 140 µg/ml by Bradford method using BSA as the standard;	GeneID (NCBI): 2887	Recommended Dilutions: WB 1:200-1:1000 IF/ICC 1:20-1:200
Source: Rabbit	UNIPROT ID: Q13322	
Isotype: IgG	Full Name: growth factor receptor-bound protein 10	
Immunogen Catalog Number: AG9921	Calculated MW: 536aa,61 kDa; 594aa,67 kDa	
	Observed MW: 65 kDa	

Applications

Tested Applications: WB, IF, ELISA	Positive Controls:
Species Specificity: human, mouse, rat	WB : HepG2 cells, IF/ICC : HepG2 cells,

Background Information

Growth factor receptor-bound protein 10 (GRB10) is an adapter protein which modulates coupling of a number of cell surface receptor kinases with specific signaling pathways. GRB10 has three consensus domains including pleckstrin homology (PH) domain, SH2/SH3 domain and Ras-associating domain. By binding to kinases, GRB10 suppresses signals from activated receptors tyrosine kinases, including the ins (INSR) and ins-like growth factor (IGF1R) receptors. It may play a role in mediating ins-stimulated ubiquitination of INSR, leading to proteasomal degradation.

Storage

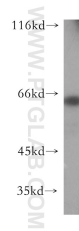
Storage:
Store at -20°C. Stable for one year after shipment.
Storage Buffer:
PBS with 0.02% sodium azide and 50% glycerol pH 7.3.
Aliquoting is unnecessary for -20°C storage

*** 20ul sizes contain 0.1% BSA

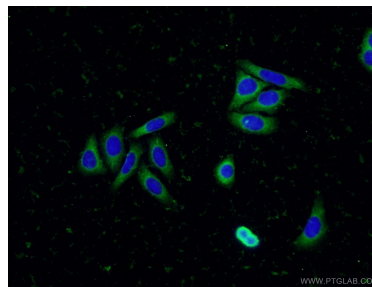
For technical support and original validation data for this product please contact:
T: 1 (888) 4PTGLAB (1-888-478-4522) (toll free in USA), or 1(312) 455-8498 (outside USA)
E: proteintech@ptglab.com
W: ptglab.com

This product is exclusively available under Proteintech Group brand and is not available to purchase from any other manufacturer.

Selected Validation Data



HepG2 cells were subjected to SDS PAGE followed by western blot with 16622-1-AP (GRB10 antibody) at dilution of 1:500 incubated at room temperature for 1.5 hours.



Immunofluorescent analysis of (-20°C Ethanol) fixed HepG2 cells using 16622-1-AP (GRB10 antibody) at dilution of 1:50 and Alexa Fluor 488-conjugated AffiniPure Goat Anti-Rabbit IgG(H+L).