

For Research Use Only

HDDC2 Polyclonal antibody

Catalog Number: 16632-1-AP

Featured Product



Basic Information

Catalog Number:

16632-1-AP

Size:

150ul, Concentration: 400 ug/ml by Nanodrop and 327 ug/ml by Bradford method using BSA as the standard;

Source:

Rabbit

Isotype:

IgG

Immunogen Catalog Number:

AG9971

GenBank Accession Number:

BC003357

GeneID (NCBI):

51020

UNIPROT ID:

Q7Z4H3

Full Name:

HD domain containing 2

Calculated MW:

23 kDa

Observed MW:

23 kDa

Purification Method:

Antigen affinity purification

Recommended Dilutions:

WB 1:500-1:3000

IHC 1:20-1:200

IF/ICC 1:20-1:200

Applications

Tested Applications:

WB, IHC, IF/ICC, ELISA

Species Specificity:

human, mouse, rat

Note-IHC: suggested antigen retrieval with TE buffer pH 9.0; (*) Alternatively, antigen retrieval may be performed with citrate buffer pH 6.0

Positive Controls:

WB : HeLa cells, K-562 cells, MCF-7 cells, PC-3 cells, mouse testis tissue, rat testis tissue

IHC : human brain tissue,

IF/ICC : PC-3 cells,

Background Information

HDDC2, also named as C6orf74, plays a role in the maintenance of pluripotency in human ES and iPS cells. HDDC2 is a nuclear-encoded but mitochondrially localized protein. It has been reported as associated with oxidative metabolism.

Storage

Storage:

Store at -20°C. Stable for one year after shipment.

Storage Buffer:

PBS with 0.02% sodium azide and 50% glycerol, pH7.3

Aliquoting is unnecessary for -20°C storage

*** 20ul sizes contain 0.1% BSA

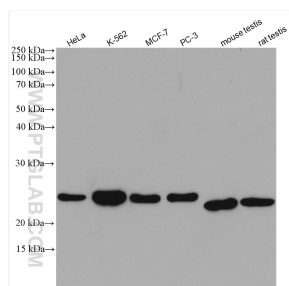
For technical support and original validation data for this product please contact:

T: 1 (888) 4PTGLAB (1-888-478-4522) (toll free in USA), or 1(312) 455-8498 (outside USA)

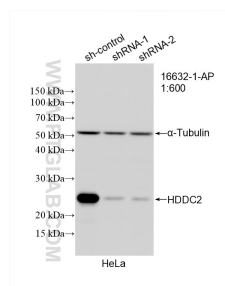
E: proteintech@ptglab.com
W: ptglab.com

This product is exclusively available under Proteintech Group brand and is not available to purchase from any other manufacturer.

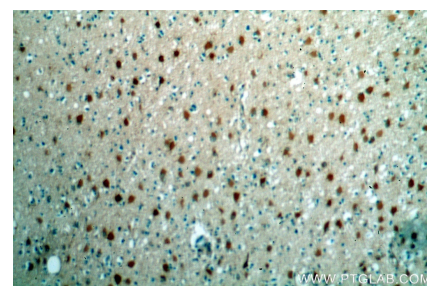
Selected Validation Data



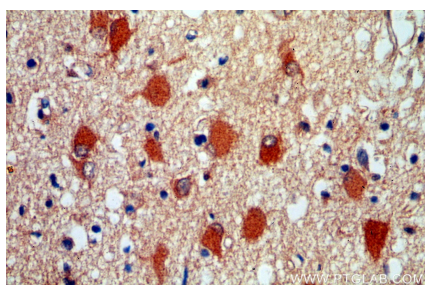
Various lysates were subjected to SDS PAGE followed by western blot with 16632-1-AP (HDHC2 antibody) at dilution of 1:1500 incubated at room temperature for 1.5 hours.



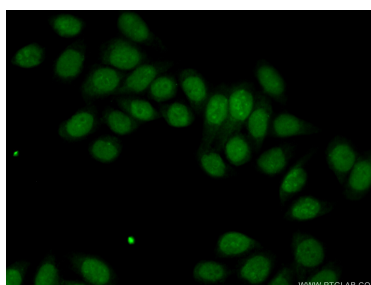
WB result of HDHC2 antibody (16632-1-AP; 1:1000; incubated at room temperature for 1.5 hours) with sh-Control and sh-HDHC2 transfected HeLa cells.



Immunohistochemical analysis of paraffin-embedded human brain using 16632-1-AP (HDHC2 antibody) at dilution of 1:100 (under 10 \times lens).



Immunohistochemical analysis of paraffin-embedded human brain using 16632-1-AP (HDHC2 antibody) at dilution of 1:100 (under 40 \times lens).



Immunofluorescent analysis of (10% Formaldehyde) fixed PC-3 cells using 16632-1-AP (HDHC2 antibody) at dilution of 1:50 and Alexa Fluor 488-conjugated AffiniPure Goat Anti-Rabbit IgG(H+L).