

For Research Use Only

SEPHS1 Polyclonal antibody

Catalog Number: 16635-1-AP

Featured Product

2 Publications



Basic Information

Catalog Number:

16635-1-AP

Size:

150ul, Concentration: 200 ug/ml by Nanodrop and 187 ug/ml by Bradford method using BSA as the standard;

Source:

Rabbit

Isotype:

IgG

Immunogen Catalog Number:

AG9978

GenBank Accession Number:

BC000941

GeneID (NCBI):

22929

UNIPROT ID:

P49903

Full Name:

selenophosphate synthetase 1

Calculated MW:

43 kDa

Observed MW:

43 kDa

Purification Method:

Antigen affinity purification

Recommended Dilutions:

WB 1:2000-1:12000

IHC 1:20-1:200

IF-P 1:200-1:800

Applications

Tested Applications:

WB, IHC, IF-P, ELISA

Cited Applications:

WB, IHC

Species Specificity:

human, mouse, rat

Cited Species:

human

Note-IHC: suggested antigen retrieval with TE buffer pH 9.0; (*) Alternatively, antigen retrieval may be performed with citrate buffer pH 6.0

Positive Controls:

WB: Jurkat cells, HepG2 cells, mouse liver tissue, T-47D cells

IHC: human lung cancer tissue,

IF-P: human placenta tissue,

Background Information

Selenophosphate synthetase 1 (SEPHS1) has been implicated in the maintenance of redox homeostasis in chondrocytes and its deficiency plays a causal role in the progression of osteoarthritis (PMID: 36202216). SEPHS1 downregulation in human umbilical vein cells (HUVECs) led to cell death rather than the inhibition of cell proliferation (PMID: 33622411).

Notable Publications

Author	Pubmed ID	Journal	Application
Shu Yang	33622411	Exp Hematol Oncol	WB, IHC
Fan Yang	38861831	Biomaterials	WB

Storage

Storage:

Store at -20°C. Stable for one year after shipment.

Storage Buffer:

PBS with 0.02% sodium azide and 50% glycerol pH 7.3.

Aliquoting is unnecessary for -20°C storage

*** 20ul sizes contain 0.1% BSA

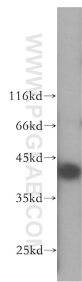
For technical support and original validation data for this product please contact:

T: 1 (888) 4PTGLAB (1-888-478-4522) (toll free in USA), or 1(312) 455-8498 (outside USA)

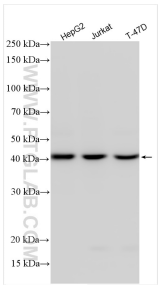
E: proteintech@ptglab.com
W: ptglab.com

This product is exclusively available under Proteintech Group brand and is not available to purchase from any other manufacturer.

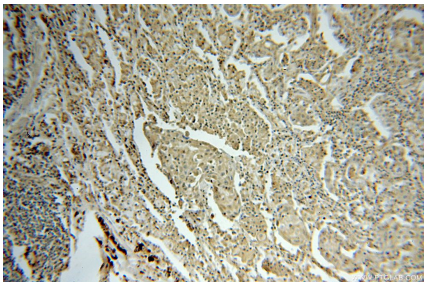
Selected Validation Data



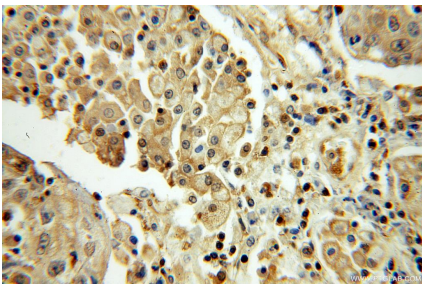
HepG2 cells were subjected to SDS PAGE followed by western blot with 16635-1-AP (SEPHS1 antibody) at dilution of 1:500 incubated at room temperature for 1.5 hours.



Various lysates were subjected to SDS PAGE followed by western blot with 16635-1-AP (SEPHS1 antibody) at dilution of 1:6000 incubated at room temperature for 1.5 hours.



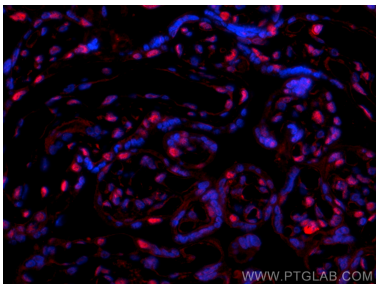
Immunohistochemical analysis of paraffin-embedded human lung cancer using 16635-1-AP (SEPHS1 antibody) at dilution of 1:100 (under 10x lens).



Immunohistochemical analysis of paraffin-embedded human placenta tissue using 16635-1-AP (SEPHS1 antibody) at dilution of 1:100 (under 40x lens).



Immunofluorescent analysis of (4% PFA) fixed paraffin-embedded human placenta tissue using SEPHS1 antibody (16635-1-AP) at dilution of 1:400 and CoraLite®594-Conjugated Goat Anti-Rabbit IgG(H+L) (SA00013-4). Heat mediated antigen retrieval with Tris-EDTA buffer (pH 9.0).



Immunofluorescent analysis of (4% PFA) fixed paraffin-embedded human placenta tissue using SEPHS1 antibody (16635-1-AP) at dilution of 1:400 and CoraLite®594-Conjugated Goat Anti-Rabbit IgG(H+L) (SA00013-4). Heat mediated antigen retrieval with Tris-EDTA buffer (pH 9.0).