

For Research Use Only

# CCDC22 Polyclonal antibody

Catalog Number: 16636-1-AP

Featured Product

18 Publications



## Basic Information

### Catalog Number:

16636-1-AP

### Size:

150ul, Concentration: 600 ug/ml by Nanodrop and 300 ug/ml by Bradford method using BSA as the standard;

### Source:

Rabbit

### Isotype:

IgG

### Immunogen Catalog Number:

AG9980

### GenBank Accession Number:

BC000972

### GeneID (NCBI):

28952

### UNIPROT ID:

O60826

### Full Name:

coiled-coil domain containing 22

### Calculated MW:

71 kDa

### Observed MW:

71 kDa

### Purification Method:

Antigen affinity purification

### Recommended Dilutions:

WB 1:500-1:2000

IP 0.5-4.0 ug for 1.0-3.0 mg of total protein lysate

## Applications

### Tested Applications:

WB, IP, ELISA

### Cited Applications:

WB, IP, CoIP

### Species Specificity:

human, mouse, rat

### Cited Species:

human, mouse

### Positive Controls:

WB : human brain tissue, HEK-293 cells, HepG2 cells, mouse colon tissue, mouse lung tissue, rat colon tissue, HeLa cells, Jurkat cells

IP : mouse lung tissue,

## Notable Publications

Author	Pubmed ID	Journal	Application
Kerrie E McNally	28892079	Nat Cell Biol	WB
Dandan Qi	26331702	Mol Biosyst	WB
Michael D Healy	36302387	Structure	WB

## Storage

### Storage:

Store at -20°C. Stable for one year after shipment.

### Storage Buffer:

PBS with 0.02% sodium azide and 50% glycerol pH 7.3.

Aliquoting is unnecessary for -20°C storage

\*\*\* 20ul sizes contain 0.1% BSA

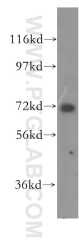
For technical support and original validation data for this product please contact:

T: 1 (888) 4PTGLAB (1-888-478-4522) (toll free in USA), or 1(312) 455-8498 (outside USA)

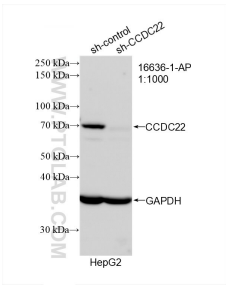
E: [proteintech@ptglab.com](mailto:proteintech@ptglab.com)  
W: [ptglab.com](http://ptglab.com)

This product is exclusively available under Proteintech Group brand and is not available to purchase from any other manufacturer.

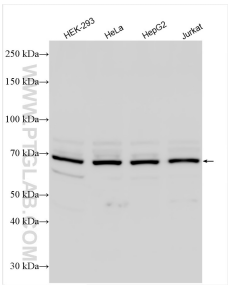
Selected Validation Data



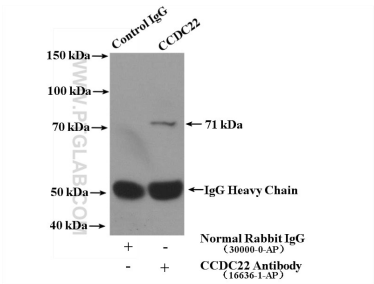
human brain tissue were subjected to SDS PAGE followed by western blot with 16636-1-AP (CCDC22 antibody) at dilution of 1:500 incubated at room temperature for 1.5 hours.



WB result of CCDC22 antibody (16636-1-AP; 1:1000; incubated at room temperature for 1.5 hours) with sh-Control and sh-CCDC22 transfected HepG2 cells.



Various lysates were subjected to SDS PAGE followed by western blot with 16636-1-AP (CCDC22 antibody) at dilution of 1:1500 incubated at room temperature for 1.5 hours.



IP result of anti-CCDC22 (IP:16636-1-AP, 4ug; Detection:16636-1-AP 1:600) with mouse lung tissue lysate 3600ug.