

For Research Use Only

LDB1 Polyclonal antibody

Catalog Number: 16650-1-AP



Basic Information

Catalog Number: 16650-1-AP	GenBank Accession Number: BC000482	Purification Method: Antigen affinity purification
Size: 150ul , Concentration: 500 µg/ml by Nanodrop;	GeneID (NCBI): 8861	Recommended Dilutions: WB 1:1000-1:4000 IP 0.5-4.0 ug for 1.0-3.0 mg of total protein lysate
Source: Rabbit	Full Name: LIM domain binding 1	
Isotype: IgG	Calculated MW: 46 kDa	
Immunogen Catalog Number: AG10082	Observed MW: 46 kDa	

Applications

Tested Applications: WB, ELISA	Positive Controls: WB : HEK-293 cells, HeLa cells, K-562 cells
Species Specificity: human	IP : MCF-7 cells,

Background Information

LIM domain-binding protein 1 (LDB1), also known as Carboxyl-terminal LIM domain-binding protein 2 (CLIM2), binds to the LIM domain of a wide variety of LIM domain-containing transcription factors. LDB1 may regulate the transcriptional activity of LIM-containing proteins by determining specific partner interactions. It plays a role in the development of interneurons and motor neurons in cooperation with LHX3 and ISL1. LDB1 acts synergistically with LHX1/LIM1 in axis formation and activation of gene expression. It also acts with LMO2 in the regulation of red blood cell development, maintaining erythroid precursors in an immature state. LDB1 strongly interacts with the LIM2 domain of LMX1A to form homodimer. LDB1 protein is expressed in a wide range of adult tissues including brain, heart, skeletal muscle, colon, thymus, spleen, kidney, liver, small intestine, lung and peripheral blood leukocytes. Due to alternative splicing events, three isoforms exist for LDB1. This antibody reacts with isoform 1.

Storage

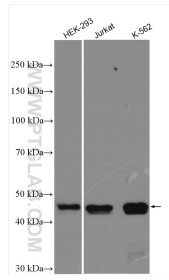
Storage:
Store at -20°C. Stable for one year after shipment.
Storage Buffer:
PBS with 0.02% sodium azide and 50% glycerol pH 7.3.
Aliquoting is unnecessary for -20°C storage

*** 20ul sizes contain 0.1% BSA

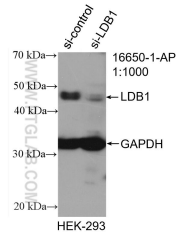
For technical support and original validation data for this product please contact:
T: 1 (888) 4PTGLAB (1-888-478-4522) (toll free in USA), or 1(312) 455-8498 (outside USA)
E: proteintech@ptglab.com
W: ptglab.com

This product is exclusively available under Proteintech Group brand and is not available to purchase from any other manufacturer.

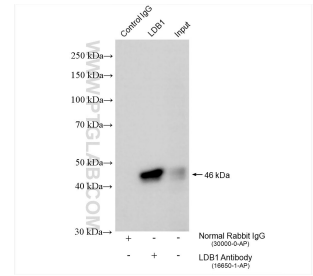
Selected Validation Data



Various lysates were subjected to SDS PAGE followed by western blot with 16650-1-AP (LDB1 antibody) at dilution of 1:2000 incubated at room temperature for 1.5 hours.



WB result of LDB1 antibody (16650-1-AP; 1:1000; incubated at room temperature for 1.5 hours) with sh-Control and sh-LDB1 transfected HEK-293 cells.



IP result of anti-LDB1(IP:16650-1-AP, 4 μ g; Detection:16650-1-AP 1:1500) with MCF-7 cells lysate 1000 μ g.