

For Research Use Only

TOMM6 Polyclonal antibody

Catalog Number: 16689-1-AP



Basic Information

Catalog Number:

16689-1-AP

Size:

150ul, Concentration: 400 ug/ml by Nanodrop and 193 ug/ml by Bradford method using BSA as the standard;

Source:

Rabbit

Isotype:

IgG

Immunogen Catalog Number:

AG10037

GenBank Accession Number:

BC018624

GeneID (NCBI):

100188893

UNIPROT ID:

Q96B49

Full Name:

translocase of outer mitochondrial membrane 6 homolog (yeast)

Calculated MW:

74 aa, 8 kDa

Observed MW:

8 kDa

Purification Method:

Antigen affinity purification

Recommended Dilutions:

WB 1:500-1:2000

IHC 1:50-1:200

Applications

Tested Applications:

WB, IHC, ELISA

Species Specificity:

human, mouse, rat

Note-IHC: suggested antigen retrieval with TE buffer pH 9.0; (*) Alternatively, antigen retrieval may be performed with citrate buffer pH 6.0

Positive Controls:

WB : human skeletal muscle tissue, MCF-7 cells

IHC : human breast cancer tissue,

Background Information

TOMM6, also named as OBTP and TOM6, is a part of the preprotein translocase complex of the outer mitochondrial membrane (TOM complex).

Storage

Storage:

Store at -20°C. Stable for one year after shipment.

Storage Buffer:

PBS with 0.02% sodium azide and 50% glycerol pH 7.3.

Aliquoting is unnecessary for -20°C storage

*** 20ul sizes contain 0.1% BSA

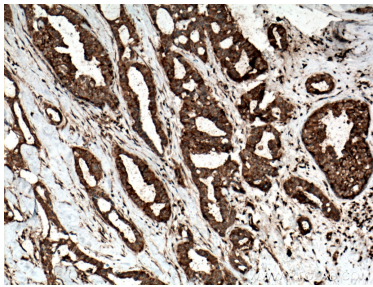
For technical support and original validation data for this product please contact:

T: 1 (888) 4PTGLAB (1-888-478-4522) (toll free in USA), or 1(312) 455-8498 (outside USA)

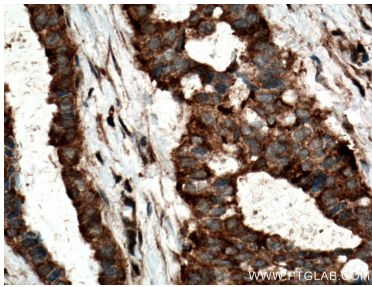
E: proteintech@ptglab.com
W: ptglab.com

This product is exclusively available under Proteintech Group brand and is not available to purchase from any other manufacturer.

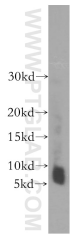
Selected Validation Data



Immunohistochemical analysis of paraffin-embedded human breast cancer tissue slide using 16689-1-AP (TOMM6 antibody) at dilution of 1:50 (under 10x lens. Heat mediated antigen retrieval with Tris-EDTA buffer (pH 9.0)).



Immunohistochemical analysis of paraffin-embedded human breast cancer tissue slide using 16689-1-AP (TOMM6 antibody) at dilution of 1:50 (under 40x lens. Heat mediated antigen retrieval with Tris-EDTA buffer (pH 9.0)).



human skeletal muscle tissue were subjected to SDS PAGE followed by western blot with 16689-1-AP (TOMM6 antibody) at dilution of 1:400 incubated at room temperature for 1.5 hours.