

For Research Use Only

ARPC5 Polyclonal antibody

Catalog Number: 16717-1-AP

6 Publications



Basic Information

Catalog Number:

16717-1-AP

Size:

150ul, Concentration: 300 ug/ml by Nanodrop and 160 ug/ml by Bradford method using BSA as the standard;

Source:

Rabbit

Isotype:

IgG

Immunogen Catalog Number:

AG10144

GenBank Accession Number:

BC057237

GeneID (NCBI):

10092

UNIPROT ID:

O15511

Full Name:

actin related protein 2/3 complex, subunit 5, 16kDa

Calculated MW:

154 aa, 17 kDa

Observed MW:

18-20 kDa

Purification Method:

Antigen affinity purification

Recommended Dilutions:

WB 1:500-1:1000

IHC 1:250-1:1000

IF/ICC 1:200-1:800

Applications

Tested Applications:

WB, IHC, IF/ICC, ELISA

Cited Applications:

WB, IHC

Species Specificity:

human, mouse, rat

Cited Species:

human, mouse

Note-IHC: suggested antigen retrieval with TE buffer pH 9.0; (*) Alternatively, antigen retrieval may be performed with citrate buffer pH 6.0

Positive Controls:

WB: mouse brain tissue, rat brain tissue, mouse thymus tissue

IHC: mouse kidney tissue, human gliomas tissue

IF/ICC: Neuro-2a cells,

Notable Publications

Author	Pubmed ID	Journal	Application
Jiying Hou	36077440	Int J Mol Sci	WB
Jason W. Lui	34468072	Pigment Cell Melanoma Res	WB
Avanti Gokhale	27927957	J Neurosci	WB

Storage

Storage:

Store at -20°C. Stable for one year after shipment.

Storage Buffer:

PBS with 0.02% sodium azide and 50% glycerol pH 7.3.

Aliquoting is unnecessary for -20°C storage

*** 20ul sizes contain 0.1% BSA

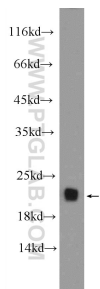
For technical support and original validation data for this product please contact:

T: 1 (888) 4PTGLAB (1-888-478-4522) (toll free in USA), or 1(312) 455-8498 (outside USA)

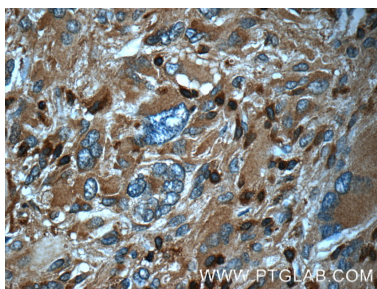
E: proteintech@ptglab.com
W: ptglab.com

This product is exclusively available under Proteintech Group brand and is not available to purchase from any other manufacturer.

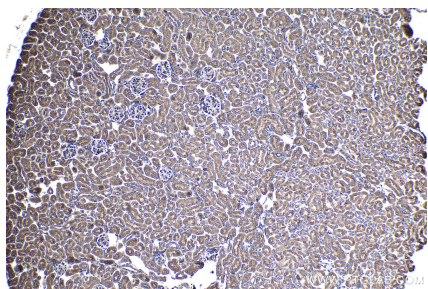
Selected Validation Data



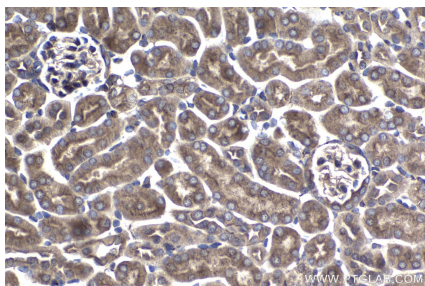
mouse brain tissue were subjected to SDS PAGE followed by western blot with 16717-1-AP (ARPC5 Antibody) at dilution of 1:600 incubated at room temperature for 1.5 hours.



Immunohistochemical analysis of paraffin-embedded human gliomas tissue slide using 16717-1-AP (ARPC5 Antibody) at dilution of 1:50 (under 40x lens).



Immunohistochemical analysis of paraffin-embedded mouse kidney tissue slide using 16717-1-AP (ARPC5 antibody) at dilution of 1:500 (under 10x lens). Heat mediated antigen retrieval with Tris-EDTA buffer (pH 9.0).



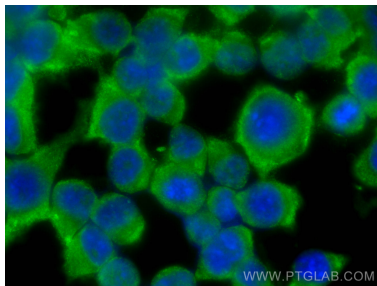
Immunohistochemical analysis of paraffin-embedded mouse kidney tissue slide using 16717-1-AP (ARPC5 antibody) at dilution of 1:500 (under 40x lens). Heat mediated antigen retrieval with Tris-EDTA buffer (pH 9.0).



Immunohistochemical analysis of paraffin-embedded mouse kidney tissue slide using 16717-1-AP (ARPC5 antibody) at dilution of 1:1000 (under 10x lens). Heat mediated antigen retrieval with Tris-EDTA buffer (pH 9.0).



Immunohistochemical analysis of paraffin-embedded mouse kidney tissue slide using 16717-1-AP (ARPC5 antibody) at dilution of 1:1000 (under 40x lens). Heat mediated antigen retrieval with Tris-EDTA buffer (pH 9.0).



Immunofluorescent analysis of (-20°C Ethanol) fixed Neuro-2a cells using ARPC5 antibody (16717-1-AP) at dilution of 1:400 and CoraLite®488-Conjugated Goat Anti-Rabbit IgG(H+L).