

For Research Use Only

RPL15 Polyclonal antibody

Catalog Number: 16740-1-AP **5 Publications**



Basic Information

Catalog Number: 16740-1-AP	GenBank Accession Number: BC070328	Purification Method: Antigen affinity purification
Size: 150ul , Concentration: 400 ug/ml by Nanodrop and 233 ug/ml by Bradford method using BSA as the standard;	GeneID (NCBI): 6138	Recommended Dilutions: WB 1:200-1:1000
Source: Rabbit	UNIPROT ID: P61313	IHC 1:50-1:500
Isotype: IgG	Full Name: ribosomal protein L15	IF/ICC 1:50-1:500
Immunogen Catalog Number: AG9948	Calculated MW: 204 aa, 24 kDa	
	Observed MW: 27 kDa	

Applications

Tested Applications: WB, IHC, IF/ICC, ELISA	Positive Controls:
Cited Applications: WB, IF	WB : COLO 320 cells, HeLa cells, K-562 cells, mouse brain tissue, SGC-7901 cells
Species Specificity: human, mouse, rat	IHC : human colon tissue,
Cited Species: human, mouse, pig	IF/ICC : HeLa cells,
Note-IHC: suggested antigen retrieval with TE buffer pH 9.0; (*) Alternatively, antigen retrieval may be performed with citrate buffer pH 6.0	

Notable Publications

Author	Pubmed ID	Journal	Application
Xu Ye	29887867	Front Immunol	WB
Yuqing Lei	34428398	Dev Cell	WB
M Carmen Lafita-Navarro	37851577	Cell Rep	WB

Storage

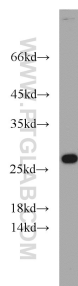
Storage:
Store at -20°C. Stable for one year after shipment.
Storage Buffer:
PBS with 0.02% sodium azide and 50% glycerol pH 7.3.
Aliquoting is unnecessary for -20°C storage

*** 20ul sizes contain 0.1% BSA

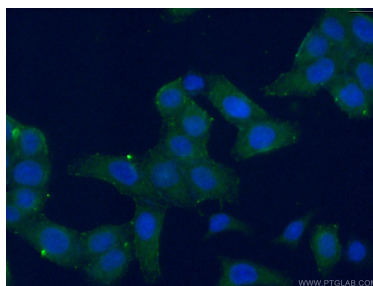
For technical support and original validation data for this product please contact:
T: 1 (888) 4PTGLAB (1-888-478-4522) (toll free in USA), or 1(312) 455-8498 (outside USA)
E: proteintech@ptglab.com
W: ptglab.com

This product is exclusively available under Proteintech Group brand and is not available to purchase from any other manufacturer.

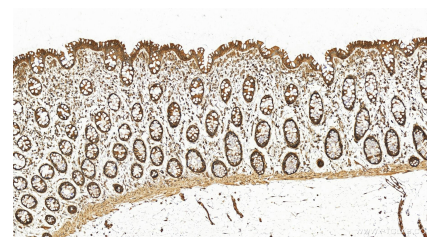
Selected Validation Data



COLO 320 cells were subjected to SDS PAGE followed by western blot with 16740-1-AP (RPL15 antibody) at dilution of 1:300 incubated at room temperature for 1.5 hours.



Immunofluorescent analysis of (-20°C Ethanol) fixed HeLa cells using 16740-1-AP (RPL15 antibody) at dilution of 1:50 and Alexa Fluor 488-conjugated AffiniPure Goat Anti-Rabbit IgG(H+L).



Immunohistochemical analysis of paraffin-embedded human colon tissue slide using 16740-1-AP (RPL15 antibody) at dilution of 1:200 (under 20x lens). Heat mediated antigen retrieval with Sodium Citrate buffer (pH 6.0).