

For Research Use Only

GLT25D1 Polyclonal antibody

Catalog Number: 16768-1-AP

Featured Product

8 Publications



Basic Information

| | | |
|---|---|--|
| Catalog Number: 16768-1-AP | GenBank Accession Number: BC020492 | Purification Method: Antigen affinity purification |
| Size: 150ul, Concentration: 450 µg/ml by Nanodrop and 267 µg/ml by Bradford method using BSA as the standard; | GeneID (NCBI): 79709 | Recommended Dilutions: WB 1:500-1:3000 IP 0.5-4.0 ug for IP and 1:500-1:1000 for WB |
| Source: Rabbit | Full Name: glycosyltransferase 25 domain containing 1 | IHC 1:50-1:500 IF 1:20-1:200 |
| Isotype: IgG | Calculated MW: 231 aa, 27 kDa | |
| Immunogen Catalog Number: AG10346 | Observed MW: 72 kDa | |

Applications

| | |
|---|---|
| Tested Applications: IF, IHC, IP, WB, ELISA | Positive Controls: WB : HeLa cells, SH-SY5Y cells |
| Cited Applications: IF, IHC, WB | IP: HeLa cells, |
| Species Specificity: human, mouse, rat | IHC: human ovary tumor tissue, |
| Cited Species: human, mouse, rat | IF: SH-SY5Y cells, |

Note-IHC: suggested antigen retrieval with TE buffer pH 9.0; (*) Alternatively, antigen retrieval may be performed with citrate buffer pH 6.0

Background Information

Notable Publications

| Author | Pubmed ID | Journal | Application |
|-------------------|-----------|--------------------|-------------|
| Randy T Cowling | 28923350 | J Mol Cell Cardiol | WB |
| Masahiko Terajima | 31726007 | Biochemistry | WB |
| Satoko Miyatake | 30412317 | Ann Neurol | WB, IF |

Storage

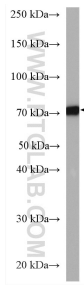
Storage:
Store at -20°C. Stable for one year after shipment.
Storage Buffer:
PBS with 0.02% sodium azide and 50% glycerol pH 7.3.
Aliquoting is unnecessary for -20°C storage

*** 20ul sizes contain 0.1% BSA

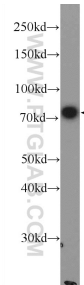
For technical support and original validation data for this product please contact:
T: 1 (888) 4PTGLAB (1-888-478-4522) (toll free in USA), or 1(312) 455-8498 (outside USA)
E: proteintech@ptglab.com
W: ptglab.com

This product is exclusively available under Proteintech Group brand and is not available to purchase from any other manufacturer.

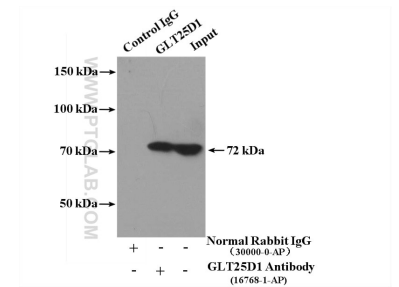
Selected Validation Data



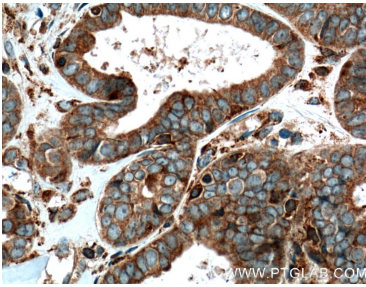
SH-SY5Y cells were subjected to SDS PAGE followed by western blot with 16768-1-AP (GLT25D1 antibody) at dilution of 1:1500 incubated at room temperature for 1.5 hours.



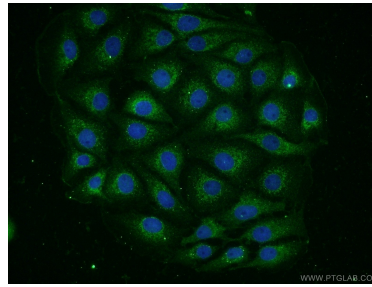
HeLa cells were subjected to SDS PAGE followed by western blot with 16768-1-AP (GLT25D1 Antibody) at dilution of 1:1000 incubated at room temperature for 1.5 hours.



IP Result of anti-GLT25D1 (IP:16768-1-AP, 4ug; Detection:16768-1-AP 1:500) with HeLa cells lysate 4000ug.



Immunohistochemical analysis of paraffin-embedded human ovary tumor tissue slide using 16768-1-AP (GLT25D1 antibody) at dilution of 1:200 (under 10x lens. Heat mediated antigen retrieval with Tris-EDTA buffer (pH 9.0).



Immunofluorescent analysis of SH-SY5Y cells using 16768-1-AP (GLT25D1 antibody) at dilution of 1:50 and Alexa Fluor 488-conjugated AffiniPure Goat Anti-Rabbit IgG(H+L).