

For Research Use Only

RAB11FIP1 Polyclonal antibody

Catalog Number: 16778-1-AP **4 Publications**



Basic Information

| | | |
|---|---|--|
| Catalog Number: 16778-1-AP | GenBank Accession Number: BC077720 | Purification Method: Antigen affinity purification |
| Size: 150ul, Concentration: 200 µg/ml by Nanodrop and 133 µg/ml by Bradford method using BSA as the standard; | GeneID (NCBI): 80223 | Recommended Dilutions: WB 1:500-1:1000 IP 0.5-4.0 ug for IP and 1:500-1:1000 for WB |
| Source: Rabbit | Full Name: RAB11 family interacting protein 1 (class I) | IHC 1:20-1:200 IF 1:20-1:200 |
| Isotype: IgG | Calculated MW: 649aa, 71 kDa; 1283aa, 137 kDa | |
| Immunogen Catalog Number: AG10179 | Observed MW: 71 kDa | |

Applications

| | |
|--|--|
| Tested Applications: IF, IHC, IP, WB, ELISA | Positive Controls: WB : HepG2 cells, COS-7 cells, SKOV-3 cells |
| Cited Applications: IHC, RIP, WB | IP : HepG2 cells, |
| Species Specificity: human, mouse, rat, monkey | IHC : human breast cancer tissue, |
| Cited Species: human, mouse | IF : A431 cells, HeLa cells |

Note-IHC: suggested antigen retrieval with TE buffer pH 9.0; (*) Alternatively, antigen retrieval may be performed with citrate buffer pH 6.0

Background Information

Notable Publications

| Author | Pubmed ID | Journal | Application |
|--------------|-----------|-----------------|-------------|
| Chi Hin Wong | 32217695 | Cancer Res | RIP |
| Chi Hin Wong | 34983537 | Mol Cancer | WB, RIP |
| Li Guo | 33855356 | Brief Bioinform | WB |

Storage

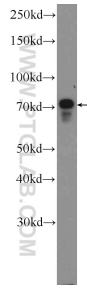
Storage:
Store at -20°C. Stable for one year after shipment.
Storage Buffer:
PBS with 0.02% sodium azide and 50% glycerol pH 7.3.
Aliquoting is unnecessary for -20°C storage

*** 20ul sizes contain 0.1% BSA

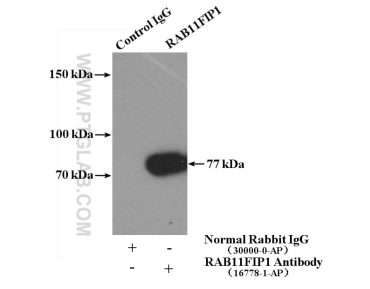
For technical support and original validation data for this product please contact:
T: 1 (888) 4PTGLAB (1-888-478-4522) (toll free in USA), or 1(312) 455-8498 (outside USA)
E: proteintech@ptglab.com
W: ptglab.com

This product is exclusively available under Proteintech Group brand and is not available to purchase from any other manufacturer.

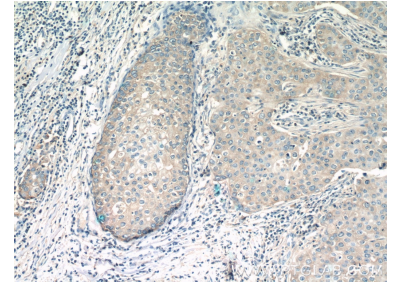
Selected Validation Data



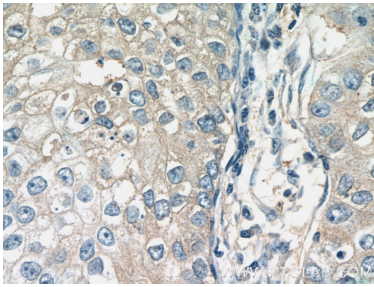
HepG2 cells were subjected to SDS PAGE followed by western blot with 16778-1-AP (RAB11FIP1 Antibody) at dilution of 1:600 incubated at room temperature for 1.5 hours.



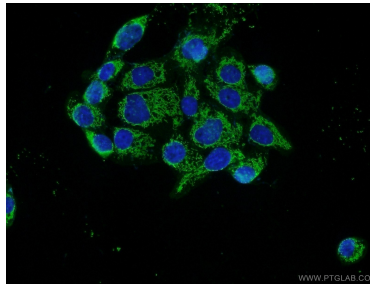
IP Result of anti-RAB11FIP1 (IP:16778-1-AP, 4ug; Detection:16778-1-AP 1:600) with HepG2 cells lysate 3200ug.



Immunohistochemical analysis of paraffin-embedded human breast cancer tissue slide using 16778-1-AP (RAB11FIP1 Antibody) at dilution of 1:50 (under 10x lens).



Immunohistochemical analysis of paraffin-embedded human breast cancer tissue slide using 16778-1-AP (RAB11FIP1 Antibody) at dilution of 1:50 (under 40x lens).



Immunofluorescent analysis of A431 cells using 16778-1-AP (RAB11FIP1 antibody) at dilution of 1:50 and Alexa Fluor 488-conjugated AffiniPure Goat Anti-Rabbit IgG(H+L).