

For Research Use Only

MED30 Polyclonal antibody

Catalog Number: 16787-1-AP

Featured Product

4 Publications



Basic Information

Catalog Number:

16787-1-AP

Size:

150ul, Concentration: 240 ug/ml by Nanodrop and 133 ug/ml by Bradford method using BSA as the standard;

Source:

Rabbit

Isotype:

IgG

Immunogen Catalog Number:

AG10221

GenBank Accession Number:

BC008226

GeneID (NCBI):

90390

UNIPROT ID:

Q96HR3

Full Name:

mediator complex subunit 30

Calculated MW:

178 aa, 20 kDa

Observed MW:

20-25 kDa

Purification Method:

Antigen affinity purification

Recommended Dilutions:

WB 1:500-1:1000

IP 0.5-4.0 ug for 1.0-3.0 mg of total protein lysate

Applications

Tested Applications:

WB, IP, ELISA

Cited Applications:

WB, IHC

Species Specificity:

human, mouse

Cited Species:

human

Positive Controls:

WB : human heart tissue, HEK-293 cells

IP : mouse heart tissue,

Background Information

MED30, also named as THRAP6 and TRAP25, is a component of the Mediator complex. MED30 has two isoforms with MW 16-20 kDa and 20-25 kDa.

Notable Publications

Author	Pubmed ID	Journal	Application
Yuki Jimbayashi Kutsuna	36436353	J Autoimmun	IHC
Yong Joo Lee	26110885	PLoS One	WB, IHC
Isabella Syring	29661722	Ann Diagn Pathol	WB, IHC

Storage

Storage:

Store at -20°C. Stable for one year after shipment.

Storage Buffer:

PBS with 0.02% sodium azide and 50% glycerol pH 7.3.

Aliquoting is unnecessary for -20°C storage

*** 20ul sizes contain 0.1% BSA

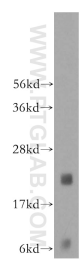
For technical support and original validation data for this product please contact:

T: 1 (888) 4PTGLAB (1-888-478-4522) (toll free in USA), or 1(312) 455-8498 (outside USA)

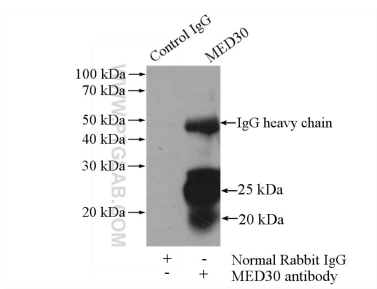
E: proteintech@ptglab.com
W: ptglab.com

This product is exclusively available under Proteintech Group brand and is not available to purchase from any other manufacturer.

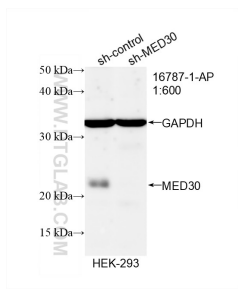
Selected Validation Data



human heart tissue were subjected to SDS PAGE followed by western blot with 16787-1-AP (MED30 antibody) at dilution of 1:200 incubated at room temperature for 1.5 hours.



IP result of anti-MED30 (IP:16787-1-AP, 4ug; Detection:16787-1-AP 1:500) with mouse heart tissue lysate 4000ug.



WB result of MED30 antibody (16787-1-AP; 1:600; incubated at room temperature for 1.5 hours) with sh-Control and sh-MED30 transfected HEK-293 cells.