

For Research Use Only

MRPL52 Polyclonal antibody

Catalog Number: 16800-1-AP

2 Publications



Basic Information

Catalog Number:

16800-1-AP

Size:

150ul, Concentration: 600 ug/ml by Nanodrop and 367 ug/ml by Bradford method using BSA as the standard;

Source:

Rabbit

Isotype:

IgG

Immunogen Catalog Number:

AG10280

GenBank Accession Number:

BC068070

GeneID (NCBI):

122704

UNIPROT ID:

Q86TS9

Full Name:

mitochondrial ribosomal protein L52

Calculated MW:

123 aa, 14 kDa

Observed MW:

18-21 kDa

Purification Method:

Antigen affinity purification

Recommended Dilutions:

IHC: 1:20-1:200

IF/ICC: 1:50-1:500

Applications

Tested Applications:

IHC, IF/ICC, ELISA

Cited Applications:

WB

Species Specificity:

human, mouse, rat

Cited Species:

human, mouse

Note-IHC: suggested antigen retrieval with TE buffer pH 9.0; (*) Alternatively, antigen retrieval may be performed with citrate buffer pH 6.0

Positive Controls:

IHC : human kidney tissue, human spleen tissue, human testis tissue

IF/ICC : HepG2 cells,

Notable Publications

Author	Pubmed ID	Journal	Application
Xiuhe Zou	34664331	J Oral Pathol Med	WB
Elena Lavdovskaia	38992089	Nat Struct Mol Biol	WB

Storage

Storage:

Store at -20°C. Stable for one year after shipment.

Storage Buffer:

PBS with 0.02% sodium azide and 50% glycerol, pH7.3

Aliquoting is unnecessary for -20°C storage

*** 20ul sizes contain 0.1% BSA

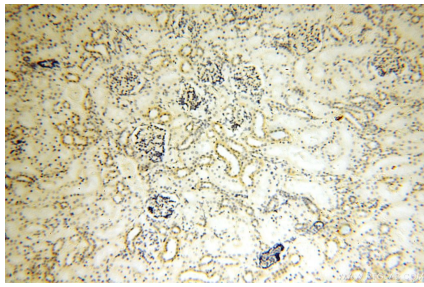
For technical support and original validation data for this product please contact:

T: 1 (888) 4PTGLAB (1-888-478-4522) (toll free in USA), or 1(312) 455-8498 (outside USA)

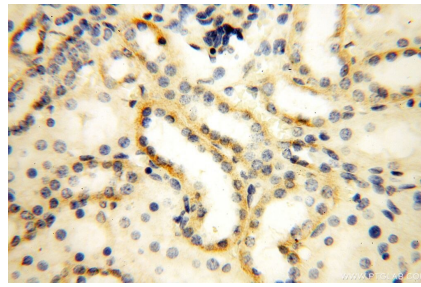
E: proteintech@ptglab.com
W: ptglab.com

This product is exclusively available under Proteintech Group brand and is not available to purchase from any other manufacturer.

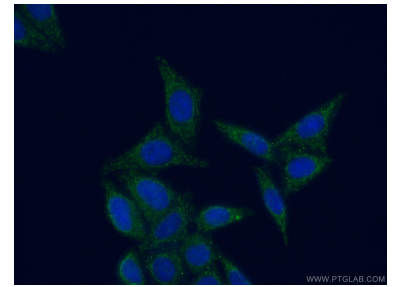
Selected Validation Data



Immunohistochemical analysis of paraffin-embedded human kidney using 16800-1-AP (MRPL52 antibody) at dilution of 1:50 (under 10x lens).



Immunohistochemical analysis of paraffin-embedded human kidney using 16800-1-AP (MRPL52 antibody) at dilution of 1:50 (under 40x lens).



Immunofluorescent analysis of (4% PFA) fixed HepG2 cells using 16800-1-AP (MRPL52 antibody) at dilution of 1:50 and Alexa Fluor 488-conjugated Goat Anti-Rabbit IgG(H+L).