

For Research Use Only

SRF Polyclonal antibody

Catalog Number: 16821-1-AP

Featured Product

24 Publications



Basic Information

Catalog Number:

16821-1-AP

Size:

150ul, Concentration: 600 ug/ml by Nanodrop and 333 ug/ml by Bradford method using BSA as the standard;

Source:

Rabbit

Isotype:

IgG

Immunogen Catalog Number:

AG10386

GenBank Accession Number:

BC048211

GeneID (NCBI):

6722

UNIPROT ID:

P11831

Full Name:

serum response factor (c-fos serum response element-binding transcription factor)

Calculated MW:

508 aa, 52 kDa

Observed MW:

65-70 kDa, 40 kDa

Purification Method:

Antigen affinity purification

Recommended Dilutions:

WB 1:1000-1:6000

IP 0.5-4.0 ug for 1.0-3.0 mg of total protein lysate

IHC 1:2000-1:8000

IF/ICC 1:300-1:1200

Applications

Tested Applications:

WB, IHC, IF/ICC, IP, ELISA

Cited Applications:

WB, IHC, IF, IP, CoIP, ChIP

Species Specificity:

human, mouse

Cited Species:

human, mouse, rat

Positive Controls:

WB: A431 cells, MCF-7 cells, K-562 cells, HEK-293 cells, HeLa cells, NIH/3T3 cells

IP: HeLa cells,

IHC: mouse heart tissue,

IF/ICC: A431 cells,

Note-IHC: suggested antigen retrieval with TE buffer pH 9.0; (*) Alternatively, antigen retrieval may be performed with citrate buffer pH 6.0

Background Information

Serum response factor (SRF) is a transcription factor that binds the serum response element (SRE), a sequence that mediates the transient response of many cellular genes to growth stimulation. SRF is required for cardiac differentiation and maturation due to the role in cardiac cell growth and muscle gene regulation. The full-length SRF protein is 67 kDa and molecular weight of cleaved fragment is 50 kDa and 20 kDa (PMID: 21769134).

Notable Publications

| Author | Pubmed ID | Journal | Application |
|----------------|-----------|----------------------|-------------|
| Chen-Qian Zhao | 36260290 | Inhal Toxicol | IF |
| Li Zhang | 30463073 | Cell Physiol Biochem | WB |
| Xiaogao Wang | 34093747 | Exp Ther Med | WB,IF |

Storage

Storage:

Store at -20°C. Stable for one year after shipment.

Storage Buffer:

PBS with 0.02% sodium azide and 50% glycerol pH 7.3.

Aliquoting is unnecessary for -20°C storage

*** 20ul sizes contain 0.1% BSA

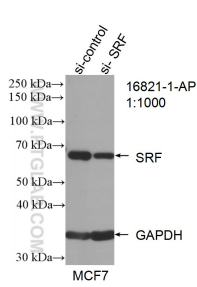
For technical support and original validation data for this product please contact:

T: 1 (888) 4PTGLAB (1-888-478-4522) (toll free in USA), or 1(312) 455-8498 (outside USA)

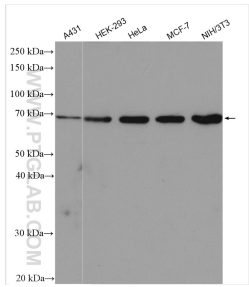
E: proteintech@ptglab.com
W: ptglab.com

This product is exclusively available under Proteintech Group brand and is not available to purchase from any other manufacturer.

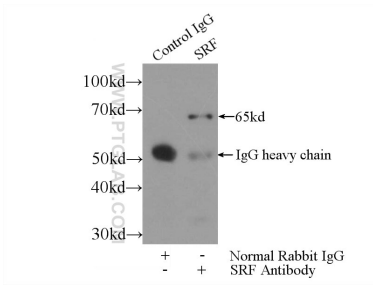
Selected Validation Data



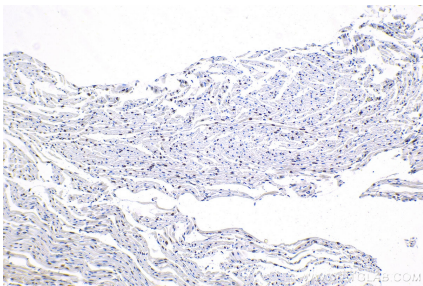
WB result of SRF antibody (16821-1-AP; 1:1000; incubated at room temperature for 1.5 hours) with sh-Control and sh-SRF transfected MCF-7 cells.



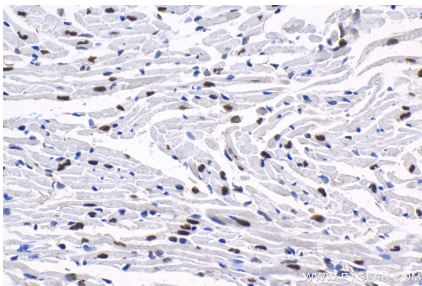
Various lysates were subjected to SDS PAGE followed by western blot with 16821-1-AP (SRF antibody) at dilution of 1:3000 incubated at room temperature for 1.5 hours.



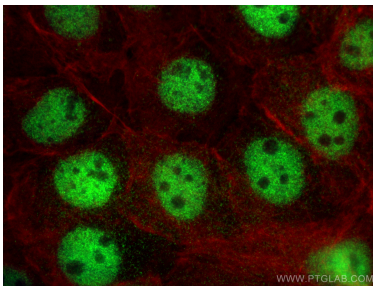
IP result of anti-SRF (IP:16821-1-AP, 3ug; Detection:16821-1-AP 1:1000) with HeLa cells lysate 3000ug.



Immunohistochemical analysis of paraffin-embedded mouse heart tissue slide using 16821-1-AP (SRF antibody) at dilution of 1:4000 (under 10x lens). Heat mediated antigen retrieval with Tris-EDTA buffer (pH 9.0).



Immunohistochemical analysis of paraffin-embedded mouse heart tissue slide using 16821-1-AP (SRF antibody) at dilution of 1:4000 (under 40x lens). Heat mediated antigen retrieval with Tris-EDTA buffer (pH 9.0).



Immunofluorescent analysis of (4% PFA) fixed A431 cells using SRF antibody (16821-1-AP) at dilution of 1:600 and Multi-rAb CoraLite® Plus 488-Goat Anti-Rabbit Recombinant Secondary Antibody (H+L) (RGAR002), CL594-Phalloidin (red).