

For Research Use Only

NIP30 Polyclonal antibody

Catalog Number: 16830-1-AP **2 Publications**



Basic Information

Catalog Number:

16830-1-AP

Size:

150ul , Concentration: 900 ug/ml by Nanodrop and 400 ug/ml by Bradford method using BSA as the standard;

Source:

Rabbit

Isotype:

IgG

Immunogen Catalog Number:

AG10439

GenBank Accession Number:

BC071952

GeneID (NCBI):

80011

UNIPROT ID:

Q9GZU8

Full Name:

NEFA-interacting nuclear protein

NIP30

Calculated MW:

254 aa, 29 kDa

Observed MW:

29 kDa

Purification Method:

Antigen affinity purification

Recommended Dilutions:

WB 1:500-1:2000

IP 0.5-4.0 ug for 1.0-3.0 mg of total protein lysate

IF/ICC 1:50-1:500

Applications

Tested Applications:

WB, IF/ICC, IP, ELISA

Cited Applications:

WB

Species Specificity:

human, mouse, rat

Cited Species:

human

Positive Controls:

WB : HeLa cells,

IP : HeLa cells,

IF/ICC : HeLa cells,

Background Information

NIP30, also known as NEFA-interacting nuclear protein 30, FAM192A (family with sequence similarity 192, member A), is a 254 amino acid nuclear protein encoded by a gene that maps to human chromosome 16q13.

Notable Publications

Author	Pubmed ID	Journal	Application
Doueiri Rami R	22876852	Retrovirology	WB
Xiao Gao	32764536	Nat Commun	WB

Storage

Storage:

Store at -20°C. Stable for one year after shipment.

Storage Buffer:

PBS with 0.02% sodium azide and 50% glycerol pH 7.3.

Aliquoting is unnecessary for -20°C storage

*** 20ul sizes contain 0.1% BSA

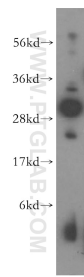
For technical support and original validation data for this product please contact:

T: 1 (888) 4PTGLAB (1-888-478-4522) (toll free in USA), or 1(312) 455-8498 (outside USA)

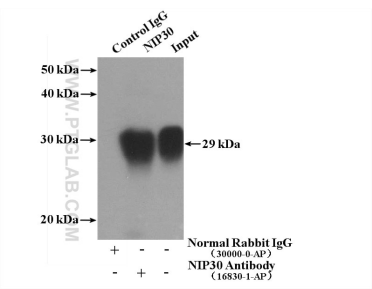
E: proteintech@ptglab.com
W: ptglab.com

This product is exclusively available under Proteintech Group brand and is not available to purchase from any other manufacturer.

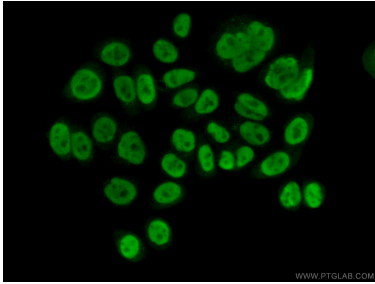
Selected Validation Data



HeLa cells were subjected to SDS PAGE followed by western blot with 16830-1-AP (NIP30 antibody) at dilution of 1:500 incubated at room temperature for 1.5 hours.



IP result of anti-NIP30 (IP:16830-1-AP, 4ug; Detection:16830-1-AP 1:500) with HeLa cells lysate 1080ug.



Immunofluorescent analysis of (10% Formaldehyde) fixed HeLa cells using 16830-1-AP (NIP30 antibody) at dilution of 1:50 and Alexa Fluor 488-conjugated Goat Anti-Rabbit IgG(H+L).