

For Research Use Only

KRT80 Polyclonal antibody

Catalog Number: 16835-1-AP

Featured Product

15 Publications



Basic Information

Catalog Number:

16835-1-AP

Size:

150ul, Concentration: 650 µg/ml by Nanodrop and 273 µg/ml by Bradford method using BSA as the standard;

Source:

Rabbit

Isotype:

IgG

Immunogen Catalog Number:

AG10498

GenBank Accession Number:

BC065180

GeneID (NCBI):

144501

UNIPROT ID:

Q6KB66

Full Name:

keratin 80

Calculated MW:

422 aa, 47 kDa

Observed MW:

47 kDa, 50 kDa

Purification Method:

Antigen affinity purification

Recommended Dilutions:

WB 1:500-1:3600

IHC 1:200-1:800

Applications

Tested Applications:

IHC, WB, ELISA

Cited Applications:

WB, IHC, IF

Species Specificity:

human, mouse, rat

Cited Species:

human, mouse

Note-IHC: suggested antigen retrieval with TE buffer pH 9.0; (*) Alternatively, antigen retrieval may be performed with citrate buffer pH 6.0

Positive Controls:

WB: NIH/3T3 cells, human skeletal muscle tissue

IHC: human skin cancer tissue, human colon cancer tissue

Background Information

KRT80 is a human IF type II epithelial keratin gene involved in the formation of IF heterodimers in various epithelial cells. KRT80 is overexpressed in many neoplasms and plays an essential role in promoting cell proliferation, migration and invasiveness, and is associated with poor prognosis in cancer patients. KRT80 has three isoforms with predicted MW of 50 kDa, 47 kDa, and 54 kDa.

Notable Publications

| Author | Pubmed ID | Journal | Application |
|-----------------|-----------|----------------|-------------|
| Eric P Rahrmann | 36175792 | Nat Genet | IF |
| Changcan Li | 30262880 | Cell Death Dis | WB, IF |
| Ouxuan Liu | 34659572 | J Cancer | WB, IHC |

Storage

Storage:

Store at -20°C. Stable for one year after shipment.

Storage Buffer:

PBS with 0.02% sodium azide and 50% glycerol pH 7.3.

Aliquoting is unnecessary for -20°C storage

*** 20ul sizes contain 0.1% BSA

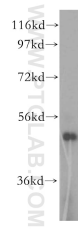
For technical support and original validation data for this product please contact:

T: 1 (888) 4PTGLAB (1-888-478-4522) (toll free in USA), or 1(312) 455-8498 (outside USA)

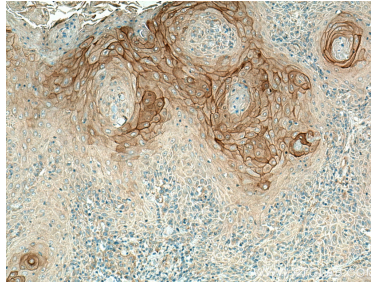
E: proteintech@ptglab.com
W: ptglab.com

This product is exclusively available under Proteintech Group brand and is not available to purchase from any other manufacturer.

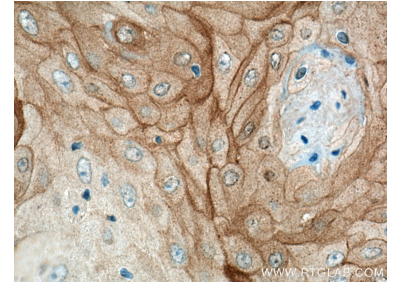
Selected Validation Data



NIH/3T3 cells were subjected to SDS PAGE followed by western blot with 16835-1-AP (KRT80 antibody) at dilution of 1:1500 incubated at room temperature for 1.5 hours.



Immunohistochemical analysis of paraffin-embedded human skin cancer tissue slide using 16835-1-AP (KRT80 antibody) at dilution of 1:400 (under 10x lens). Heat mediated antigen retrieval with Tris-EDTA buffer (pH 9.0).



Immunohistochemical analysis of paraffin-embedded human skin cancer tissue slide using 16835-1-AP (KRT80 antibody) at dilution of 1:400 (under 40x lens). Heat mediated antigen retrieval with Tris-EDTA buffer (pH 9.0).