

For Research Use Only

# HEBP1 Polyclonal antibody

Catalog Number: 16842-1-AP

Featured Product



## Basic Information

### Catalog Number:

16842-1-AP

### Size:

150ul, Concentration: 300 ug/ml by Nanodrop and 160 ug/ml by Bradford method using BSA as the standard;

### Source:

Rabbit

### Isotype:

IgG

### Immunogen Catalog Number:

AG10538

### GenBank Accession Number:

BC016277

### GeneID (NCBI):

50865

### UNIPROT ID:

Q9NRV9

### Full Name:

heme binding protein 1

### Calculated MW:

189 aa, 21 kDa

### Observed MW:

21 kDa

### Purification Method:

Antigen affinity purification

### Recommended Dilutions:

WB 1:500-1:3000

IHC 1:50-1:500

## Applications

### Tested Applications:

WB, IHC, ELISA

### Species Specificity:

human, mouse, rat

**Note-IHC: suggested antigen retrieval with TE buffer pH 9.0; (\*) Alternatively, antigen retrieval may be performed with citrate buffer pH 6.0**

### Positive Controls:

WB : L02 cells, A549 cells, mouse liver tissue, rat liver tissue

IHC : human liver cancer tissue, mouse brain tissue

## Background Information

HEBP1 (heme binding protein 1) is an intracellular tetrapyrrole-binding protein. Catalog#16842-1-AP is a rabbit polyclonal antibody raised against the full-length of human HEBP1. The MW of this protein is 21 kDa, and this antibody specially recognises the 21 kDa protein.

## Storage

### Storage:

Store at -20°C. Stable for one year after shipment.

### Storage Buffer:

PBS with 0.02% sodium azide and 50% glycerol pH 7.3.

Aliquoting is unnecessary for -20°C storage

\*\*\* 20ul sizes contain 0.1% BSA

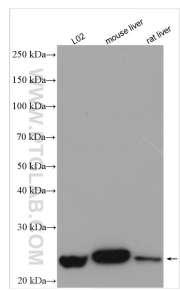
For technical support and original validation data for this product please contact:

T: 1 (888) 4PTGLAB (1-888-478-4522) (toll free in USA), or 1(312) 455-8498 (outside USA)

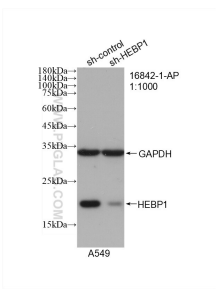
E: [proteintech@ptglab.com](mailto:proteintech@ptglab.com)  
W: [ptglab.com](http://ptglab.com)

This product is exclusively available under Proteintech Group brand and is not available to purchase from any other manufacturer.

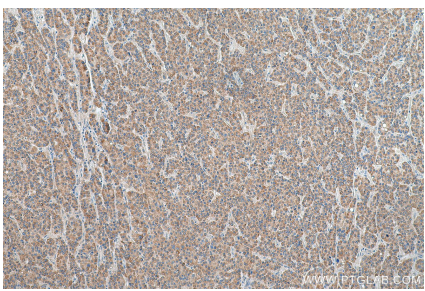
Selected Validation Data



Various lysates were subjected to SDS PAGE followed by western blot with 16842-1-AP (HEBP1 antibody) at dilution of 1:1500 incubated at room temperature for 1.5 hours.



WB result of HEBP1 antibody (16842-1-AP; 1:1000; incubated at room temperature for 1.5 hours) with sh-Control and sh-HEBP1 transfected A549 cells.



Immunohistochemical analysis of paraffin-embedded human liver cancer tissue slide using 16842-1-AP (HEBP1 antibody) at dilution of 1:200 (under 10x lens). Heat mediated antigen retrieval with Tris-EDTA buffer (pH 9.0).