

For Research Use Only

AMOTL1 Polyclonal antibody

Catalog Number: 16871-1-AP

5 Publications



Basic Information

Catalog Number:

16871-1-AP

Size:

150ul, Concentration: 350 ug/ml by Nanodrop and 187 ug/ml by Bradford method using BSA as the standard;

Source:

Rabbit

Isotype:

IgG

GenBank Accession Number:

NM_130847

GeneID (NCBI):

154810

UNIPROT ID:

Q8IY63

Full Name:

angiotensin like 1

Calculated MW:

107 kDa

Observed MW:

107 kDa

Purification Method:

Antigen affinity purification

Recommended Dilutions:

WB 1:500-1:1000

Applications

Tested Applications:

WB, ELISA

Cited Applications:

WB, IF

Species Specificity:

human, mouse, rat

Cited Species:

human, mouse

Positive Controls:

WB: HeLa cells,

Background Information

The protein encoded by this gene is a peripheral membrane protein that is a component of tight junctions or TJs. TJs form an apical junctional structure and act to control paracellular permeability and maintain cell polarity. This protein is related to angiotensin, an angiotensin binding protein that regulates endothelial cell migration and capillary formation.

Notable Publications

Author	Pubmed ID	Journal	Application
Gang Xu	34480788	Environ Toxicol	WB
Rioto Suzuki	27179426	Pulm Pharmacol Ther	WB, IF
Weian Zhu	39643184	Int J Biol Macromol	WB

Storage

Storage:

Store at -20°C. Stable for one year after shipment.

Storage Buffer:

PBS with 0.02% sodium azide and 50% glycerol pH 7.3.

Aliquoting is unnecessary for -20°C storage

*** 20ul sizes contain 0.1% BSA

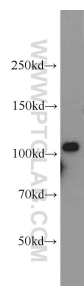
For technical support and original validation data for this product please contact:

T: 1 (888) 4PTGLAB (1-888-478-4522) (toll free in USA), or 1(312) 455-8498 (outside USA)

E: proteintech@ptglab.com
W: ptglab.com

This product is exclusively available under Proteintech Group brand and is not available to purchase from any other manufacturer.

Selected Validation Data



HeLa cells were subjected to SDS PAGE followed by western blot with 16871-1-AP (AMOTL1 antibody) at dilution of 1:500 incubated at room temperature for 1.5 hours.