

For Research Use Only

# GPT / ALT1 Polyclonal antibody

Catalog Number: 16897-1-AP

10 Publications



## Basic Information

Catalog Number:

16897-1-AP

Size:

150ul, Concentration: 400 ug/ml by Nanodrop and 266 ug/ml by Bradford method using BSA as the standard;

Source:

Rabbit

Isotype:

IgG

Immunogen Catalog Number:

AG10424

GenBank Accession Number:

BC018207

GeneID (NCBI):

2875

UNIPROT ID:

P24298

Full Name:

glutamic-pyruvate transaminase (alanine aminotransferase)

Calculated MW:

496 aa, 55 kDa

Observed MW:

50-55 kDa

Purification Method:

Antigen affinity purification

Recommended Dilutions:

WB 1:1000-1:8000

## Applications

Tested Applications:

WB, ELISA

Cited Applications:

WB

Species Specificity:

human, mouse, rat

Cited Species:

human, rat, mouse

Positive Controls:

WB: mouse liver tissue, rat liver tissue, mouse spleen tissue

## Background Information

GPT, also known as ALT1 (glutamate-pyruvate transaminase 1), catalyzes the reversible transamination between alanine and 2-oxoglutarate to generate pyruvate and glutamate and, therefore, plays a key role in the intermediary metabolism of glucose and amino acids. Serum activity levels of this enzyme are routinely used as a biomarker of liver injury caused by drug toxicity, infection, alcohol, and steatosis. A related gene on chromosome 16 encodes a putative mitochondrial alanine aminotransaminase.

## Notable Publications

Author	Pubmed ID	Journal	Application
Weiwei Dai	36256480	J Clin Invest	WB
Shizhen Qin	27575953	J Proteome Res	WB
Shuaiwei Wang	33293898	Mediators Inflamm	WB

## Storage

Storage:

Store at -20°C. Stable for one year after shipment.

Storage Buffer:

PBS with 0.02% sodium azide and 50% glycerol pH 7.3.

Aliquoting is unnecessary for -20°C storage

\*\*\* 20ul sizes contain 0.1% BSA

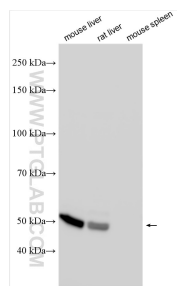
For technical support and original validation data for this product please contact:

T: 1 (888) 4PTGLAB (1-888-478-4522) (toll free in USA), or 1(312) 455-8498 (outside USA)

E: [proteintech@ptglab.com](mailto:proteintech@ptglab.com)  
W: [ptglab.com](http://ptglab.com)

This product is exclusively available under Proteintech Group brand and is not available to purchase from any other manufacturer.

## Selected Validation Data



Various lysates were subjected to SDS PAGE followed by western blot with 16897-1-AP (GPT/ALT1 antibody) at dilution of 1:4000 incubated at room temperature for 1.5 hours.