

For Research Use Only

NDUFB1 Polyclonal antibody

Catalog Number: 16902-1-AP

3 Publications



Basic Information

Catalog Number:

16902-1-AP

Size:

150ul, Concentration: 400 ug/ml by Nanodrop;

Source:

Rabbit

Isotype:

IgG

Immunogen Catalog Number:

AG10443

GenBank Accession Number:

BC009691

GeneID (NCBI):

4707

UNIPROT ID:

O75438

Full Name:

NADH dehydrogenase (ubiquinone) 1 beta subcomplex, 1, 7kDa

Calculated MW:

12 kDa, 7 kDa

Observed MW:

7 kDa

Purification Method:

Antigen affinity purification

Recommended Dilutions:

WB 1:500-1:2400

IHC 1:20-1:200

Applications

Tested Applications:

WB, IHC, ELISA

Cited Applications:

WB

Species Specificity:

human, mouse

Cited Species:

human

Note-IHC: suggested antigen retrieval with TE buffer pH 9.0; (*) Alternatively, antigen retrieval may be performed with citrate buffer pH 6.0

Positive Controls:

WB : A375 cells, mouse heart tissue, human colon tissue

IHC : human kidney tissue,

Notable Publications

| Author | Pubmed ID | Journal | Application |
|------------|-----------|----------------|-------------|
| Fuchen Liu | 26000923 | Int J Neurosci | WB |
| Yanchun Ji | 32723871 | J Biol Chem | WB |
| Hezhi Fang | 33852835 | Cell Rep | WB |

Storage

Storage:

Store at -20°C. Stable for one year after shipment.

Storage Buffer:

PBS with 0.02% sodium azide and 50% glycerol pH 7.3.

Aliquoting is unnecessary for -20°C storage

*** 20ul sizes contain 0.1% BSA

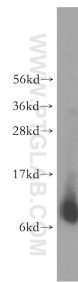
For technical support and original validation data for this product please contact:

T: 1 (888) 4PTGLAB (1-888-478-4522) (toll free in USA), or 1(312) 455-8498 (outside USA)

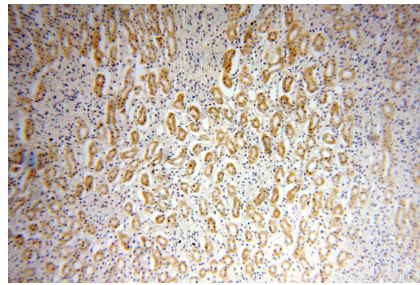
E: proteintech@ptglab.com
W: ptglab.com

This product is exclusively available under Proteintech Group brand and is not available to purchase from any other manufacturer.

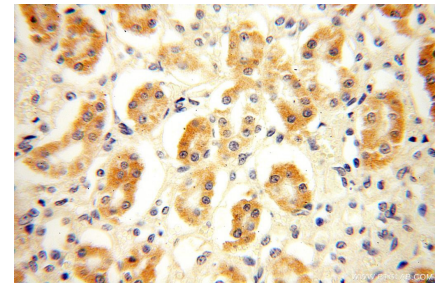
Selected Validation Data



A375 cells were subjected to SDS PAGE followed by western blot with 16902-1-AP (NDUFB1 antibody) at dilution of 1:400 incubated at room temperature for 1.5 hours.



Immunohistochemical analysis of paraffin-embedded human kidney using 16902-1-AP (NDUFB1 antibody) at dilution of 1:100 (under 10x lens).



Immunohistochemical analysis of paraffin-embedded human kidney using 16902-1-AP (NDUFB1 antibody) at dilution of 1:100 (under 40x lens).