

For Research Use Only

PARP6 Polyclonal antibody

Catalog Number:16945-1-AP



Basic Information

Catalog Number:

16945-1-AP

Size:

150ul , Concentration: 300 ug/ml by Nanodrop and 167 ug/ml by Bradford method using BSA as the standard;

Source:

Rabbit

Isotype:

IgG

Immunogen Catalog Number:

AG10556

GenBank Accession Number:

BC015176

GeneID (NCBI):

56965

UNIPROT ID:

Q2NL67

Full Name:

poly (ADP-ribose) polymerase family, member 6

Calculated MW:

71 kDa, 58 kDa, 43 kDa

Observed MW:

60-65 kDa

Purification Method:

Antigen affinity purification

Recommended Dilutions:

WB 1:500-1:1000

Applications

Tested Applications:

WB, ELISA

Species Specificity:

human, mouse, rat

Positive Controls:

WB : HepG2 cells, Jurkat cells

Storage

Storage:

Store at -20°C. Stable for one year after shipment.

Storage Buffer:

PBS with 0.02% sodium azide and 50% glycerol pH 7.3.

Aliquoting is unnecessary for -20°C storage

***** 20ul sizes contain 0.1% BSA**

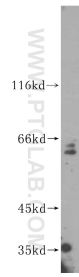
For technical support and original validation data for this product please contact:

T: 1 (888) 4PTGLAB (1-888-478-4522) (toll free in USA), or 1(312) 455-8498 (outside USA)

E: proteintech@ptglab.com
W: ptglab.com

This product is exclusively available under Proteintech Group brand and is not available to purchase from any other manufacturer.

Selected Validation Data



HepG2 cells were subjected to SDS PAGE followed by western blot with 16945-1-AP (PARP6 antibody) at dilution of 1:300 incubated at room temperature for 1.5 hours.