

For Research Use Only

KLHL21 Polyclonal antibody

Catalog Number: 16952-1-AP

Featured Product

1 Publications



Basic Information

Catalog Number:

16952-1-AP

Size:

150ul, Concentration: 450 ug/ml by Nanodrop and 360 ug/ml by Bradford method using BSA as the standard;

Source:

Rabbit

Isotype:

IgG

Immunogen Catalog Number:

AG10582

GenBank Accession Number:

BC034039

GeneID (NCBI):

9903

UNIPROT ID:

Q9UJP4

Full Name:

kelch-like 21 (Drosophila)

Calculated MW:

597 aa, 67 kDa

Observed MW:

67 kDa

Purification Method:

Antigen affinity purification

Recommended Dilutions:

WB 1:500-1:1000

IP 0.5-4.0 ug for 1.0-3.0 mg of total protein lysate

IHC 1:20-1:200

Applications

Tested Applications:

WB, IP, IHC, ELISA

Cited Applications:

WB, ColP

Species Specificity:

human, mouse, rat

Cited Species:

human

Note-IHC: suggested antigen retrieval with TE buffer pH 9.0; (*) Alternatively, antigen retrieval may be performed with citrate buffer pH 6.0

Positive Controls:

WB : A431 cells, HeLa cells

IP : HeLa cells,

IHC : human brain tissue, human liver cancer tissue

Notable Publications

Author	Pubmed ID	Journal	Application
Changchun Li	35084622	Breast Cancer Res Treat	WB, ColP

Storage

Storage:

Store at -20°C. Stable for one year after shipment.

Storage Buffer:

PBS with 0.02% sodium azide and 50% glycerol pH 7.3.

Aliquoting is unnecessary for -20°C storage

*** 20ul sizes contain 0.1% BSA

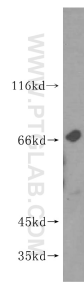
For technical support and original validation data for this product please contact:

T: 1 (888) 4PTGLAB (1-888-478-4522) (toll free in USA), or 1(312) 455-8498 (outside USA)

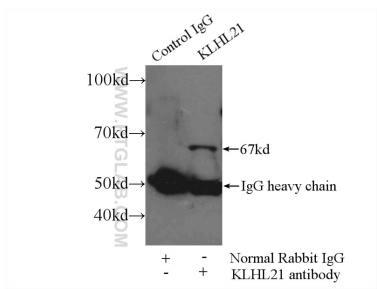
E: proteintech@ptglab.com
W: ptglab.com

This product is exclusively available under Proteintech Group brand and is not available to purchase from any other manufacturer.

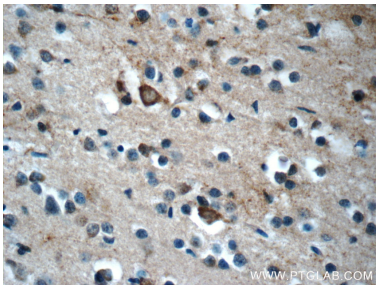
Selected Validation Data



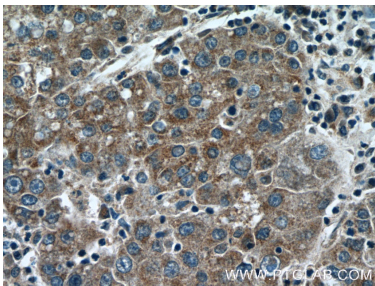
A431 cells were subjected to SDS PAGE followed by western blot with 16952-1-AP (KLHL21 antibody) at dilution of 1:400 incubated at room temperature for 1.5 hours.



IP result of anti-KLHL21 (IP:16952-1-AP, 3ug; Detection:16952-1-AP 1:300) with HeLa cells lysate 1800ug.



Immunohistochemical analysis of paraffin-embedded human brain tissue slide using 16952-1-AP (KLHL21 Antibody) at dilution of 1:50 (under 40x lens).



Immunohistochemical analysis of paraffin-embedded human liver cancer tissue slide using 16952-1-AP (KLHL21 Antibody) at dilution of 1:50 (under 40x lens).