

For Research Use Only

# MTERF Polyclonal antibody

Catalog Number: 16957-1-AP

2 Publications



## Basic Information

### Catalog Number:

16957-1-AP

### Size:

150ul, Concentration: 500 ug/ml by Nanodrop and 287 ug/ml by Bradford method using BSA as the standard;

### Source:

Rabbit

### Isotype:

IgG

### Immunogen Catalog Number:

AG10640

### GenBank Accession Number:

BC000965

### GeneID (NCBI):

7978

### UNIPROT ID:

Q99551

### Full Name:

mitochondrial transcription termination factor

### Calculated MW:

46 kDa

### Observed MW:

31 kDa

### Purification Method:

Antigen affinity purification

### Recommended Dilutions:

WB 1:500-1:2000

## Applications

### Tested Applications:

WB, ELISA

### Cited Applications:

WB

### Species Specificity:

human, mouse, rat

### Cited Species:

human, mouse

### Positive Controls:

WB : HeLa cells, Jurkat cells

## Background Information

Mitochondrial transcription termination factor (MTERF) also named as Mterf1 is a 399 amino acid protein, which localizes in the mitochondrion and belongs to the mTERF family. MTERF contains three leucine zippers that form a three-stranded coiled-coil that binds to DNA. It has been suggested that only the phosphorylated form of MTERF has transcription termination activity. MTERF plays a central role in the control of mitochondrial rRNA and mRNA synthesis. MTERFD1 is also thought to act as a mitochondrial transcription regulator and is expressed as two isoforms produced by alternative splicing. Using DNA affinity chromatography, a fraction called MTERF was found to be associated with foot-printing capacity, and this contained two polypeptides of 34 and 31 kDa. Moreover, termination-promoting activity appears to reside in the 34-kDa protein. (PMID:7681833).

## Notable Publications

Author	Pubmed ID	Journal	Application
Stanka Matic	29572490	Nat Commun	WB
Jing Geng	26414765	Nat Immunol	WB

## Storage

### Storage:

Store at -20°C. Stable for one year after shipment.

### Storage Buffer:

PBS with 0.02% sodium azide and 50% glycerol pH 7.3.

Aliquoting is unnecessary for -20°C storage

\*\*\* 20ul sizes contain 0.1% BSA

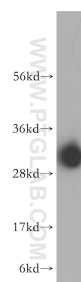
For technical support and original validation data for this product please contact:

T: 1 (888) 4PTGLAB (1-888-478-4522) (toll free in USA), or 1(312) 455-8498 (outside USA)

E: [proteintech@ptglab.com](mailto:proteintech@ptglab.com)  
W: [ptglab.com](http://ptglab.com)

This product is exclusively available under Proteintech Group brand and is not available to purchase from any other manufacturer.

## Selected Validation Data



HeLa cells were subjected to SDS PAGE followed by western blot with 16957-1-AP (MTERF antibody) at dilution of 1:400 incubated at room temperature for 1.5 hours.