

For Research Use Only

# NVL Polyclonal antibody

Catalog Number: 16970-1-AP **3 Publications**



## Basic Information

<b>Catalog Number:</b> 16970-1-AP	<b>GenBank Accession Number:</b> BC012105	<b>Purification Method:</b> Antigen affinity purification
<b>Size:</b> 150ul , Concentration: 600 µg/ml by Nanodrop and 333 µg/ml by Bradford method using BSA as the standard;	<b>GeneID (NCBI):</b> 4931	<b>Recommended Dilutions:</b> WB 1:1000-1:6000 IF 1:10-1:100
<b>Source:</b> Rabbit	<b>Full Name:</b> nuclear VCP-like	
<b>Isotype:</b> IgG	<b>Calculated MW:</b> 856aa,95 kDa; 659aa,73 kDa	
<b>Immunogen Catalog Number:</b> AG9205	<b>Observed MW:</b> 95 kDa	

## Applications

<b>Tested Applications:</b> IF, WB, ELISA	<b>Positive Controls:</b>
<b>Cited Applications:</b> IF, WB	<b>WB :</b> mouse thymus tissue, mouse lung tissue, HeLa cells, mouse kidney tissue, rat thymus tissue
<b>Species Specificity:</b> human, mouse, rat	<b>IF :</b> HepG2 cells,
<b>Cited Species:</b> human	

## Background Information

NVL(nuclear VCP-like) belongs to the AAA ATPase family and may facilitate the dissociation and recycling of nucleolin, thereby promoting efficient ribosome biogenesis. It acts as an ATP-dependent zinc metallopeptidase. This protein has 5 isoforms produced by alternative splicing.

## Notable Publications

Author	Pubmed ID	Journal	Application
Heeseon An	32612236	Nature	WB
Arthur Louche	36609656	Nat Commun	WB,IF
Yun Chawon C	19015314	J Cell Biol	IF

## Storage

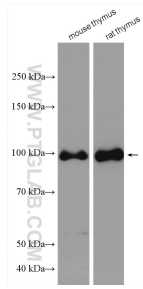
**Storage:**  
Store at -20°C. Stable for one year after shipment.  
**Storage Buffer:**  
PBS with 0.02% sodium azide and 50% glycerol pH 7.3.  
Aliquoting is unnecessary for -20°C storage

\*\*\* 20ul sizes contain 0.1% BSA

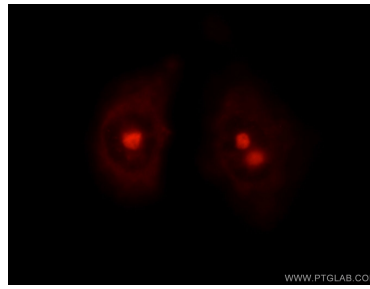
For technical support and original validation data for this product please contact:  
T: 1 (888) 4PTGLAB (1-888-478-4522) (toll free in USA), or 1(312) 455-8498 (outside USA) E: proteintech@ptglab.com W: ptglab.com

This product is exclusively available under Proteintech Group brand and is not available to purchase from any other manufacturer.

## Selected Validation Data



Various lysates were subjected to SDS PAGE followed by western blot with 16970-1-AP (NVL antibody) at dilution of 1:3000 incubated at room temperature for 1.5 hours.



Immunofluorescent analysis of HepG2 cells using 16970-1-AP (NVL antibody) at dilution of 1:25 and Rhodamine-Goat anti-Rabbit IgG.