

For Research Use Only

# AGBL3 Polyclonal antibody

Catalog Number: 16990-1-AP

Featured Product

1 Publications



## Basic Information

### Catalog Number:

16990-1-AP

### Size:

150ul, Concentration: 133 ug/ml by Bradford method using BSA as the standard;

### Source:

Rabbit

### Isotype:

IgG

### Immunogen Catalog Number:

AG10592

### GenBank Accession Number:

BC030651

### GeneID (NCBI):

340351

### UNIPROT ID:

Q8NEM8

### Full Name:

ATP/GTP binding protein-like 3

### Calculated MW:

73 kDa, 116 kDa

### Observed MW:

73 kDa

### Purification Method:

Antigen affinity purification

### Recommended Dilutions:

WB 1:200-1:1000

IHC 1:20-1:200

## Applications

### Tested Applications:

WB, IHC, ELISA

### Cited Applications:

WB

### Species Specificity:

human, mouse

### Cited Species:

mouse

**Note-IHC: suggested antigen retrieval with TE buffer pH 9.0; (\*) Alternatively, antigen retrieval may be performed with citrate buffer pH 6.0**

### Positive Controls:

WB : mouse liver tissue, L02 cells

IHC : human lung cancer tissue, human testis tissue

## Background Information

AGBL3, also named as CCP3, is a metallopeptidase that may play a role in the processing of tubulin. AGBL3 has some isoforms with MW 107 kDa, 73 kDa, 116 kDa and 20 kDa.

## Notable Publications

Author	Pubmed ID	Journal	Application
Zhen Xiong	31699823	J Exp Med	WB

## Storage

### Storage:

Store at -20°C. Stable for one year after shipment.

### Storage Buffer:

PBS with 0.02% sodium azide and 50% glycerol pH 7.3.

Aliquoting is unnecessary for -20°C storage

\*\*\* 20ul sizes contain 0.1% BSA

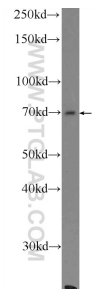
For technical support and original validation data for this product please contact:

T: 1 (888) 4PTGLAB (1-888-478-4522) (toll free in USA), or 1(312) 455-8498 (outside USA)

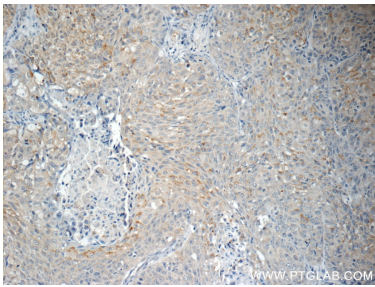
E: [proteintech@ptglab.com](mailto:proteintech@ptglab.com)  
W: [ptglab.com](http://ptglab.com)

This product is exclusively available under Proteintech Group brand and is not available to purchase from any other manufacturer.

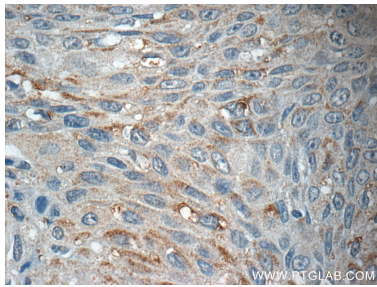
Selected Validation Data



mouse liver tissue were subjected to SDS PAGE followed by western blot with 16990-1-AP (AGBL3 Antibody) at dilution of 1:300 incubated at room temperature for 1.5 hours.



Immunohistochemical analysis of paraffin-embedded human lung cancer tissue slide using 16990-1-AP (AGBL3 Antibody) at dilution of 1:50 (under 10x lens).



Immunohistochemical analysis of paraffin-embedded human lung cancer tissue slide using 16990-1-AP (AGBL3 Antibody) at dilution of 1:50 (under 40x lens).