

For Research Use Only

# RWDD1 Polyclonal antibody

Catalog Number: 17036-1-AP

1 Publications



## Basic Information

### Catalog Number:

17036-1-AP

### Size:

150ul, Concentration: 300 ug/ml by Nanodrop and 140 ug/ml by Bradford method using BSA as the standard;

### Source:

Rabbit

### Isotype:

IgG

### Immunogen Catalog Number:

AG10525

### GenBank Accession Number:

BC015802

### GeneID (NCBI):

51389

### UNIPROT ID:

Q9H446

### Full Name:

RWD domain containing 1

### Calculated MW:

243 aa, 28 kDa

### Observed MW:

28-36 kDa

### Purification Method:

Antigen affinity purification

### Recommended Dilutions:

WB 1:500-1:3000

IP 0.5-4.0 ug for 1.0-3.0 mg of total protein lysate

IHC 1:50-1:500

## Applications

### Tested Applications:

WB, IP, IHC, ELISA

### Cited Applications:

WB, IHC

### Species Specificity:

human, mouse, rat

### Cited Species:

mouse

### Positive Controls:

WB: HEK-293 cells, mouse thymus tissue, HeLa cells, Jurkat cells, rat thymus tissue

IP: mouse thymus tissue,

IHC: mouse kidney tissue,

**Note-IHC: suggested antigen retrieval with TE buffer pH 9.0; (\*) Alternatively, antigen retrieval may be performed with citrate buffer pH 6.0**

## Background Information

RWDD1(RWD domain-containing protein 1) is also named as DFRP2(DRG family-regulatory protein 2) and belongs to the RWDD1/GIR2 family. RWDD1 is a thymus aging-related protein which contains an RWD domain at its N-terminus and it is expressed in both thymocytes and thymic epithelial cells and located primarily in the cytoplasm. This protein expression in thymus is decreased in aged and oxidatively stressed mice (PMID:18954556). RWDD1 has a calculated molecular mass of 28 kDa, and apparent molecular mass of 32-36 kDa due to its high acidic amino acid composition that results in the slowed migration behavior in electrophoresis (PMID: 30278355, 18954556).

## Notable Publications

Author	Pubmed ID	Journal	Application
Gr?tsch Helga H	22406838	Mol Cell Endocrinol	WB,IHC

## Storage

### Storage:

Store at -20°C. Stable for one year after shipment.

### Storage Buffer:

PBS with 0.02% sodium azide and 50% glycerol pH 7.3.

Aliquoting is unnecessary for -20°C storage

\*\*\* 20ul sizes contain 0.1% BSA

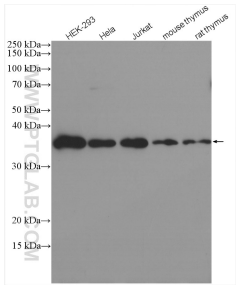
For technical support and original validation data for this product please contact:

T: 1 (888) 4PTGLAB (1-888-478-4522) (toll free in USA), or 1(312) 455-8498 (outside USA)

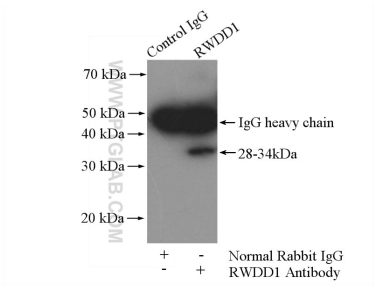
E: [proteintech@ptglab.com](mailto:proteintech@ptglab.com)  
W: [ptglab.com](http://ptglab.com)

This product is exclusively available under Proteintech Group brand and is not available to purchase from any other manufacturer.

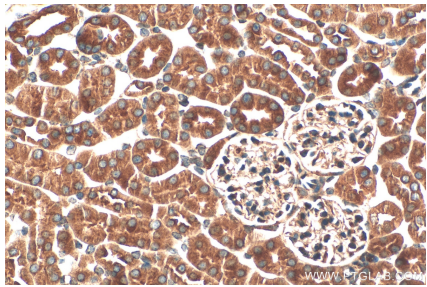
Selected Validation Data



Various lysates were subjected to SDS PAGE followed by western blot with 17036-1-AP (RWDD1 antibody) at dilution of 1:1500 incubated at room temperature for 1.5 hours.



IP result of anti-RWDD1 (IP:17036-1-AP, 4ug; Detection:17036-1-AP 1:300) with mouse thymus tissue lysate 2800ug.



Immunohistochemical analysis of paraffin-embedded mouse kidney tissue slide using 17036-1-AP (RWDD1 antibody) at dilution of 1:200 (under 40x lens). Heat mediated antigen retrieval with Tris-EDTA buffer (pH 9.0).