

For Research Use Only

CLIP4 Polyclonal antibody

Catalog Number: 17044-1-AP

1 Publications



Basic Information

Catalog Number:

17044-1-AP

Size:

150ul, Concentration: 900 ug/ml by Nanodrop and 413 ug/ml by Bradford method using BSA as the standard;

Source:

Rabbit

Isotype:

IgG

Immunogen Catalog Number:

AG10590

GenBank Accession Number:

BC015310

GeneID (NCBI):

79745

UNIPROT ID:

Q8N3C7

Full Name:

CAP-GLY domain containing linker protein family, member 4

Calculated MW:

705 aa, 76 kDa

Observed MW:

65-75 kDa

Purification Method:

Antigen affinity purification

Recommended Dilutions:

WB 1:200-1:1000

IF/ICC 1:50-1:500

Applications

Tested Applications:

WB, IF/ICC, ELISA

Cited Applications:

WB

Species Specificity:

human

Cited Species:

human

Positive Controls:

WB : HUVEC cells, Y79 cells

IF/ICC : C2C12 cells, HUVEC cells

Notable Publications

Author	Pubmed ID	Journal	Application
Zhiwei Peng	39121973	Cell Signal	WB

Storage

Storage:

Store at -20°C. Stable for one year after shipment.

Storage Buffer:

PBS with 0.02% sodium azide and 50% glycerol, pH7.3

Aliquoting is unnecessary for -20°C storage

*** 20ul sizes contain 0.1% BSA

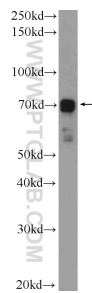
For technical support and original validation data for this product please contact:

T: 1 (888) 4PTGLAB (1-888-478-4522) (toll free in USA), or 1(312) 455-8498 (outside USA)

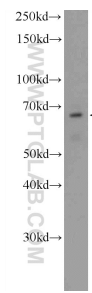
E: proteintech@ptglab.com
W: ptglab.com

This product is exclusively available under Proteintech Group brand and is not available to purchase from any other manufacturer.

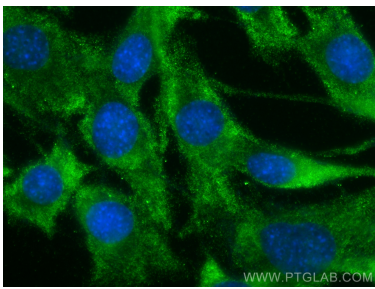
Selected Validation Data



HUVEC cells were subjected to SDS PAGE followed by western blot with 17044-1-AP (CLIP4 Antibody) at dilution of 1:300 incubated at room temperature for 1.5 hours.



Y79 cells were subjected to SDS PAGE followed by western blot with 17044-1-AP (CLIP4 Antibody) at dilution of 1:600 incubated at room temperature for 1.5 hours.



Immunofluorescent analysis of (-20°C Ethanol) fixed C2C12 cells using CLIP4 antibody (17044-1-AP) at dilution of 1:200 and CoraLite®488-Conjugated Goat Anti-Rabbit IgG(H+L) (SA00013-2).