

For Research Use Only

# UBE2F Polyclonal antibody

Catalog Number: 17056-1-AP **4 Publications**



## Basic Information

<b>Catalog Number:</b> 17056-1-AP	<b>GenBank Accession Number:</b> BC010549	<b>Purification Method:</b> Antigen affinity purification
<b>Size:</b> 150ul , Concentration: 240 µg/ml by Nanodrop and 200 µg/ml by Bradford method using BSA as the standard;	<b>GeneID (NCBI):</b> 140739	<b>Recommended Dilutions:</b> WB 1:500-1:2000 IHC 1:20-1:200 IF 1:50-1:500
<b>Source:</b> Rabbit	<b>Full Name:</b> ubiquitin-conjugating enzyme E2F (putative)	
<b>Isotype:</b> IgG	<b>Calculated MW:</b> 185 aa, 21 kDa	
<b>Immunogen Catalog Number:</b> AG10764	<b>Observed MW:</b> 21 kDa	

## Applications

### Tested Applications:

IF, IHC, WB, ELISA

### Cited Applications:

WB

### Species Specificity:

human, mouse, rat

### Cited Species:

human, mouse

**Note-IHC: suggested antigen retrieval with TE buffer pH 9.0; (\*) Alternatively, antigen retrieval may be performed with citrate buffer pH 6.0**

### Positive Controls:

**WB** : A375 cells, Jurkat cells, mouse ovary tissue, rat ovary tissue

**IHC** : human skin tissue,

**IF** : NIH/3T3 cells,

## Background Information

UBE2F (Ubiquitin-conjugating enzyme E2 F) is also named as NCE2 (NEDD8-conjugating enzyme 2) and belongs to the ubiquitin-conjugating enzyme family. The canonical uBE2M catalyses the modification of most cullins, whereas uBE2F is specifically responsible for cUL5 neddylation. uBE2F is regulated differently than uBE2M, supporting the idea that neddylation is used to fine-tune ubiquitin-chain formation by different cullin-dependent E3s (PMID:19465892).

## Notable Publications

Author	Pubmed ID	Journal	Application
Di Wu	35641500	Nat Commun	WB
Qiyin Zhou	35641493	Nat Commun	WB
Xiaoling Hong	30545630	Biochem Biophys Res Commun	WB

## Storage

### Storage:

Store at -20°C. Stable for one year after shipment.

### Storage Buffer:

PBS with 0.02% sodium azide and 50% glycerol pH 7.3.

Aliquoting is unnecessary for -20°C storage

\*\*\* 20ul sizes contain 0.1% BSA

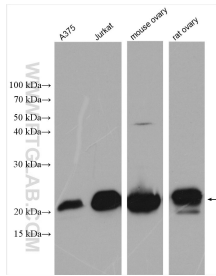
For technical support and original validation data for this product please contact:

T: 1 (888) 4PTGLAB (1-888-478-4522) (toll free in USA), or 1(312) 455-8498 (outside USA)

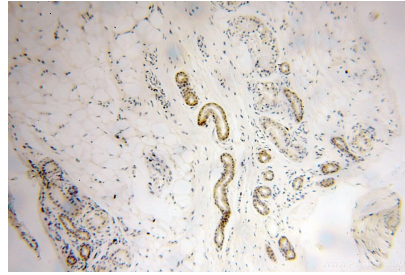
E: [proteintech@ptglab.com](mailto:proteintech@ptglab.com)  
W: [ptglab.com](http://ptglab.com)

This product is exclusively available under Proteintech Group brand and is not available to purchase from any other manufacturer.

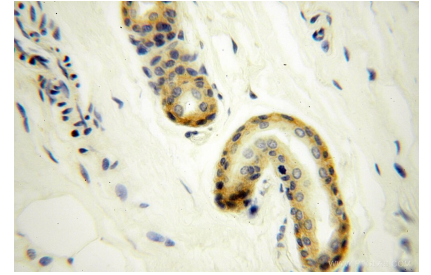
## Selected Validation Data



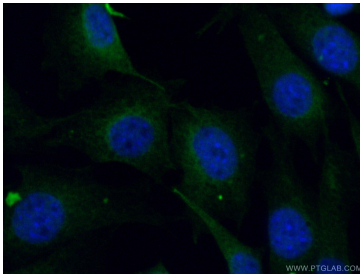
Various lysates were subjected to SDS PAGE followed by western blot with 17056-1-AP (UBE2F antibody) at dilution of 1:1000 incubated at room temperature for 1.5 hours.



Immunohistochemical analysis of paraffin-embedded human skin using 17056-1-AP (UBE2F antibody) at dilution of 1:100 (under 10x lens).



Immunohistochemical analysis of paraffin-embedded human skin using 17056-1-AP (UBE2F antibody) at dilution of 1:100 (under 40x lens).



Immunofluorescent analysis of (4% PFA) fixed NIH/3T3 cells using 17056-1-AP (UBE2F antibody) at dilution of 1:50 and Alexa Fluor 488-conjugated AffiniPure Goat Anti-Rabbit IgG(H+L).