

For Research Use Only

NFE2L1 Polyclonal antibody

Catalog Number: 17062-1-AP

2 Publications



Basic Information

Catalog Number:

17062-1-AP

Size:

150ul, Concentration: 240 ug/ml by Nanodrop and 133 ug/ml by Bradford method using BSA as the standard;

Source:

Rabbit

Isotype:

IgG

Immunogen Catalog Number:

AG10832

GenBank Accession Number:

BC010623

GeneID (NCBI):

4779

UNIPROT ID:

Q14494

Full Name:

nuclear factor (erythroid-derived 2)-like 1

Calculated MW:

772 aa, 85 kDa

Observed MW:

65 kDa

Purification Method:

Antigen affinity purification

Recommended Dilutions:

WB 1:500-1:1000

IF/ICC 1:200-1:800

Applications

Tested Applications:

WB, IF/ICC, ELISA

Cited Applications:

WB, IHC

Species Specificity:

human, mouse

Cited Species:

human, rat

Positive Controls:

WB : HEK-293 cells, NIH/3T3 cells

IF/ICC : HepG2 cells,

Background Information

NFE2L1, also named as HBZ17, NRF1, TCF11 and LCR-F1, belongs to the bZIP family and CNC subfamily. It activates erythroid-specific, globin gene expression. NFE2L1 is involved in mediating ascorbic acid-induced osterix expression and osteoblast differentiation via binding to the antioxidant response element of the osterix promoter. NFE2L1, produced by osteoblasts, is involved in regulating osterix expression, osteoblast differentiation, and bone formation. (PMID:19887580). This antibody is a rabbit polyclonal antibody raised against residues near the C terminus of human ESRRG.

Notable Publications

Author	Pubmed ID	Journal	Application
Shuai Wang	32188015	Int J Mol Sci	WB
Jie Xing	37243831	Stem Cell Rev Rep	WB, IHC

Storage

Storage:

Store at -20°C. Stable for one year after shipment.

Storage Buffer:

PBS with 0.02% sodium azide and 50% glycerol pH 7.3.

Aliquoting is unnecessary for -20°C storage

*** 20ul sizes contain 0.1% BSA

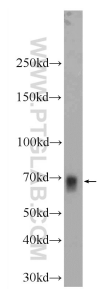
For technical support and original validation data for this product please contact:

T: 1 (888) 4PTGLAB (1-888-478-4522) (toll free in USA), or 1(312) 455-8498 (outside USA)

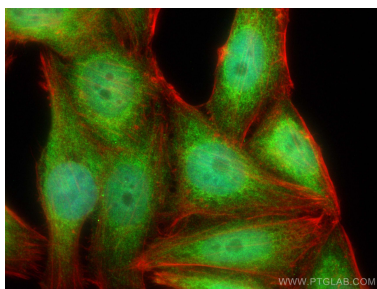
E: proteintech@ptglab.com
W: ptglab.com

This product is exclusively available under Proteintech Group brand and is not available to purchase from any other manufacturer.

Selected Validation Data



HEK-293 cells were subjected to SDS PAGE followed by western blot with 17062-1-AP (NFE2L1 Antibody) at dilution of 1:600 incubated at room temperature for 1.5 hours.



Immunofluorescent analysis of (4% PFA) fixed HepG2 cells using NFE2L1 antibody (17062-1-AP) at dilution of 1:400 and Coralite@488-Conjugated Goat Anti-Rabbit IgG(H+L), CL594-phalloidin (red).