

For Research Use Only

SLFN1 Polyclonal antibody

Catalog Number: 17065-1-AP



Basic Information

Catalog Number: 17065-1-AP	GenBank Accession Number: BC022037	Purification Method: Antigen affinity purification
Size: 150ul , Concentration: 200 µg/ml by Nanodrop and 147 µg/ml by Bradford method using BSA as the standard;	GeneID (NCBI): 200172	Recommended Dilutions: WB 1:500-1:1000 IHC 1:20-1:200
Source: Rabbit	Full Name: schlafen-like 1	
Isotype: IgG	Calculated MW: 407 aa, 46 kDa	
Immunogen Catalog Number: AG10887	Observed MW: 46 kDa	

Applications

Tested Applications: IHC, WB, ELISA	Positive Controls: WB : COLO 320 cells,
Species Specificity: human	IHC : human kidney tissue, human brain tissue, human liver tissue, human ovary tissue, human placenta tissue, human skin tissue, human spleen tissue, human testis tissue
Note-IHC: suggested antigen retrieval with TE buffer pH 9.0; (*) Alternatively, antigen retrieval may be performed with citrate buffer pH 6.0	

Background Information

SLFN1 belongs to the Schlafen family. It has some isoforms with MW 28 kDa and 39-46 kDa.

Storage

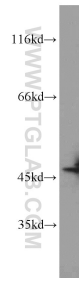
Storage:
Store at -20°C. Stable for one year after shipment.
Storage Buffer:
PBS with 0.02% sodium azide and 50% glycerol pH 7.3.
Aliquoting is unnecessary for -20°C storage

*** 20ul sizes contain 0.1% BSA

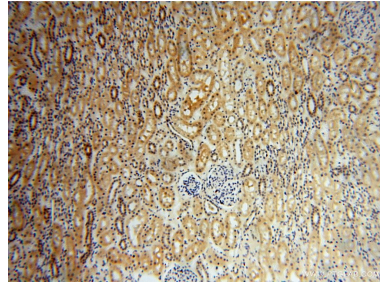
For technical support and original validation data for this product please contact:
T: 1 (888) 4PTGLAB (1-888-478-4522) (toll free in USA), or 1(312) 455-8498 (outside USA)
E: proteintech@ptglab.com
W: ptglab.com

This product is exclusively available under Proteintech Group brand and is not available to purchase from any other manufacturer.

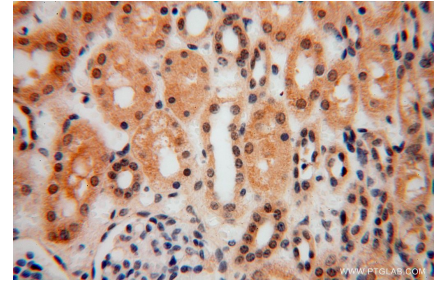
Selected Validation Data



COLO 320 cells were subjected to SDS PAGE followed by western blot with 17065-1-AP (SLFN1 antibody) at dilution of 1:800 incubated at room temperature for 1.5 hours.



Immunohistochemical analysis of paraffin-embedded human kidney using 17065-1-AP (SLFN1 antibody) at dilution of 1:100 (under 10x lens).



Immunohistochemical analysis of paraffin-embedded human kidney using 17065-1-AP (SLFN1 antibody) at dilution of 1:100 (under 40x lens).