

For Research Use Only

# SPHK2 Polyclonal antibody

Catalog Number: 17096-1-AP

Featured Product

48 Publications



## Basic Information

### Catalog Number:

17096-1-AP

### Size:

150ul, Concentration: 550 ug/ml by Nanodrop;

### Source:

Rabbit

### Isotype:

IgG

### Immunogen Catalog Number:

AG10569

### GenBank Accession Number:

BC010671

### GeneID (NCBI):

56848

### UNIPROT ID:

Q9NRA0

### Full Name:

sphingosine kinase 2

### Calculated MW:

618 aa, 65 kDa

### Observed MW:

65-70 kDa

### Purification Method:

Antigen affinity purification

### Recommended Dilutions:

WB 1:1000-1:6000

IP 0.5-4.0 ug for 1.0-3.0 mg of total protein lysate

IHC 1:50-1:500

IF/ICC 1:50-1:500

## Applications

### Tested Applications:

WB, IHC, IF/ICC, FC (Intra), IP, ELISA

### Cited Applications:

WB, IHC, IF, IP, CoIP

### Species Specificity:

human, mouse, rat

### Cited Species:

human, mouse, rat, zebrafish

**Note-IHC: suggested antigen retrieval with TE buffer pH 9.0; (\*) Alternatively, antigen retrieval may be performed with citrate buffer pH 6.0**

### Positive Controls:

**WB**: L02 cells, mouse brain tissue, human kidney tissue, A549 cells, mouse heart tissue, rat brain tissue, Raji cells, HCT 116 cells, mouse kidney tissue, mouse liver tissue

**IP**: mouse liver tissue,

**IHC**: human breast cancer tissue, human kidney tissue, human liver tissue, mouse kidney tissue, rat kidney tissue, rat small intestine tissue

**IF/ICC**: HeLa cells,

## Background Information

SPHK2(Sphingosine kinase 2) is also named as SK2, SPIK2 and catalyzes the phosphorylation of sphingosine to form sphingosine 1-phosphate (SPP), a lipid mediator with both intra- and extracellular functions. SPHK2 associates with HDAC1 and HDAC2 in repressor complexes and is selectively enriched at the promoters of the genes encoding the cyclin-dependent kinase inhibitor p21 or the transcriptional regulator c-fos, where it enhanced local histone H3 acetylation and transcription. SphK2 is a ~66kDa protein that is most abundantly expressed in the liver and heart(PMID:19168577). SphK2 has two splice variants, which are the 68-kDa SphK2-S and the NH2-terminal extended 72-kDa SphK2-L (PMID:17974990).

## Notable Publications

Author	Pubmed ID	Journal	Application
Heidi A Neubauer	30250299	Oncogene	WB,IF,IP
Mengqiong Xu	36070294	PLoS Pathog	CoIP
Teresa Sanchez	12954648	J Biol Chem	WB

## Storage

### Storage:

Store at -20°C. Stable for one year after shipment.

### Storage Buffer:

PBS with 0.02% sodium azide and 50% glycerol pH 7.3.

Aliquoting is unnecessary for -20°C storage

\*\*\* 20ul sizes contain 0.1% BSA

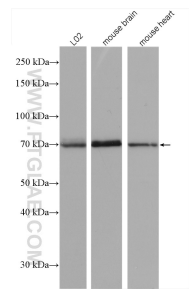
For technical support and original validation data for this product please contact:

T: 1 (888) 4PTGLAB (1-888-478-4522) (toll free in USA), or 1(312) 455-8498 (outside USA)

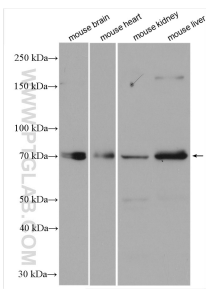
E: [proteintech@ptglab.com](mailto:proteintech@ptglab.com)  
W: [ptglab.com](http://ptglab.com)

This product is exclusively available under Proteintech Group brand and is not available to purchase from any other manufacturer.

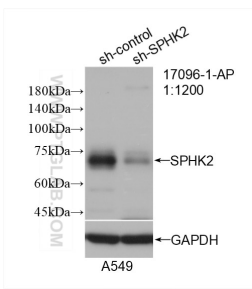
Selected Validation Data



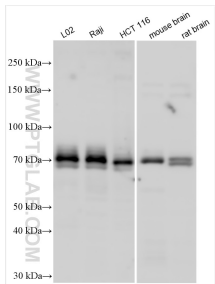
Various lysates were subjected to SDS PAGE followed by western blot with 17096-1-AP (SPHK2 antibody) at dilution of 1:3000 incubated at room temperature for 1.5 hours.



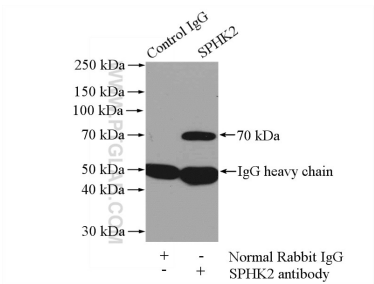
Various lysates were subjected to SDS PAGE followed by western blot with 17096-1-AP (SPHK2 antibody) at dilution of 1:3000 incubated at room temperature for 1.5 hours.



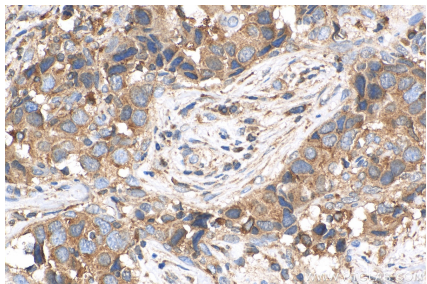
WB result of SPHK2 antibody (17096-1-AP; 1:1200; incubated at room temperature for 1.5 hours) with sh-Control and sh-SPHK2 transfected A549 cells.



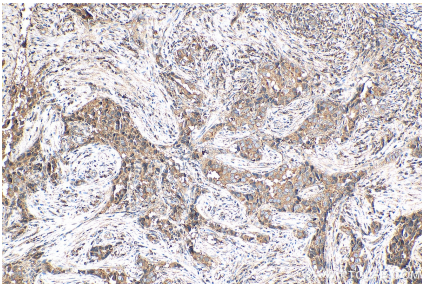
Various lysates were subjected to SDS PAGE followed by western blot with 17096-1-AP (SPHK2 antibody) at dilution of 1:3000 incubated at room temperature for 1.5 hours.



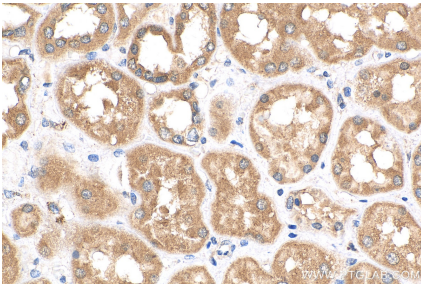
IP result of anti-SPHK2 (IP:17096-1-AP, 4ug; Detection:17096-1-AP 1:800) with mouse liver tissue lysate 4000ug.



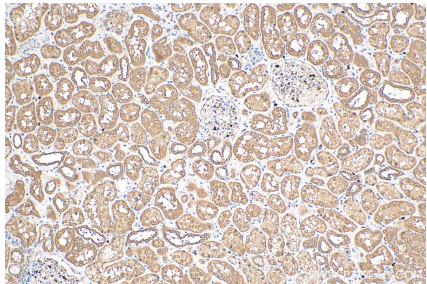
Immunohistochemical analysis of paraffin-embedded human breast cancer tissue slide using 17096-1-AP (SPHK2 antibody) at dilution of 1:200 (under 40x lens). Heat mediated antigen retrieval with Tris-EDTA buffer (pH 9.0).



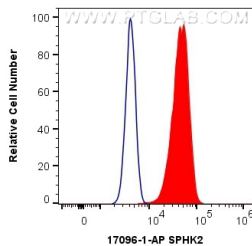
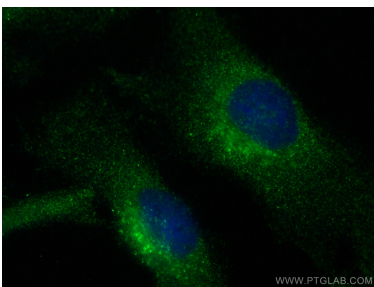
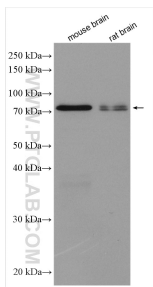
Immunohistochemical analysis of paraffin-embedded human breast cancer tissue slide using 17096-1-AP (SPHK2 antibody) at dilution of 1:200 (under 10x lens). Heat mediated antigen retrieval with Tris-EDTA buffer (pH 9.0).



Immunohistochemical analysis of paraffin-embedded human kidney tissue slide using 17096-1-AP (SPHK2 antibody) at dilution of 1:200 (under 40x lens). Heat mediated antigen retrieval with Tris-EDTA buffer (pH 9.0).



Immunohistochemical analysis of paraffin-embedded human kidney tissue slide using 17096-1-AP (SPHK2 antibody) at dilution of 1:200 (under 10x lens). Heat mediated antigen retrieval with Tris-EDTA buffer (pH 9.0).



Various lysates were subjected to SDS PAGE followed by western blot with 17096-1-AP (SPHK2 antibody) at dilution of 1:5000 incubated at room temperature for 1.5 hours.

Immunofluorescent analysis of (-20°C Ethanol) fixed HeLa cells using SPHK2 antibody (17096-1-AP) at dilution of 1:200 and CoraLite® 488-Conjugated Goat Anti-Rabbit IgG(H+L) (SA00013-2).

1X10<sup>6</sup> HeLa cells were intracellularly stained with 0.4 ug Anti-Human SPHK2 (17096-1-AP) and CoraLite® 488-Conjugated Goat Anti-Rabbit IgG(H+L) at dilution 1:1000 (red), or 0.4 ug Isotype Control. Cells were fixed with 4% PFA and permeabilized with Flow Cytometry Perm Buffer (PF00011-C).