

For Research Use Only

CAPSL Polyclonal antibody

Catalog Number: 17174-1-AP **1 Publications**



Basic Information

Catalog Number: 17174-1-AP	GenBank Accession Number: BC017586	Purification Method: Antigen affinity purification
Size: 150ul , Concentration: 700 µg/ml by Nanodrop and 227 µg/ml by Bradford method using BSA as the standard;	GeneID (NCBI): 133690	Recommended Dilutions: WB 1:500-1:2000 IP 0.5-4.0 ug for IP and 1:500-1:1000 for WB IHC 1:20-1:200
Source: Rabbit	Full Name: calcyphosine-Like	
Isotype: IgG	Calculated MW: 198 aa, 23 kDa	
Immunogen Catalog Number: AG10771	Observed MW: 24 kDa	

Applications

Tested Applications:

IHC, IP, WB, ELISA

Cited Applications:

WB

Species Specificity:

human, mouse, rat

Cited Species:

mouse

Note-IHC: suggested antigen retrieval with TE buffer pH 9.0; (*) Alternatively, antigen retrieval may be performed with citrate buffer pH 6.0

Positive Controls:

WB : mouse lung tissue,

IP : mouse lung tissue,

IHC : human lung cancer tissue,

Background Information

Notable Publications

Author	Pubmed ID	Journal	Application
Angie Lindner	31186450	Sci Rep	WB

Storage

Storage:

Store at -20°C. Stable for one year after shipment.

Storage Buffer:

PBS with 0.02% sodium azide and 50% glycerol pH 7.3.

Aliquoting is unnecessary for -20°C storage

*** 20ul sizes contain 0.1% BSA

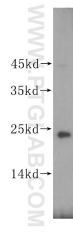
For technical support and original validation data for this product please contact:

T: 1 (888) 4PTGLAB (1-888-478-4522) (toll free in USA), or 1(312) 455-8498 (outside USA)

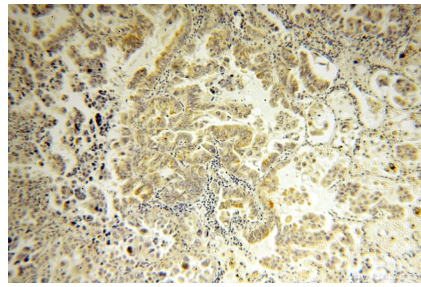
E: proteintech@ptglab.com
W: ptglab.com

This product is exclusively available under Proteintech Group brand and is not available to purchase from any other manufacturer.

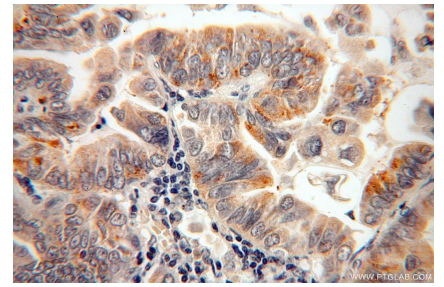
Selected Validation Data



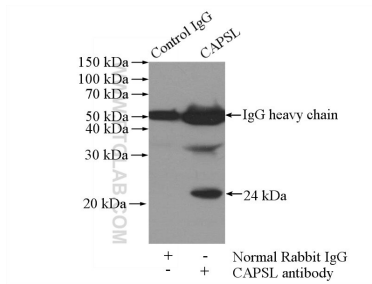
mouse lung tissue were subjected to SDS PAGE followed by western blot with 17174-1-AP (CAPSL antibody) at dilution of 1:800 incubated at room temperature for 1.5 hours.



Immunohistochemical analysis of paraffin-embedded human lung cancer using 17174-1-AP (CAPSL antibody) at dilution of 1:100 (under 10x lens).



Immunohistochemical analysis of paraffin-embedded human lung cancer using 17174-1-AP (CAPSL antibody) at dilution of 1:100 (under 40x lens).



IP Result of anti-CAPSL (IP:17174-1-AP, 4ug; Detection:17174-1-AP 1:500) with mouse lung tissue lysate 4000ug.