

For Research Use Only

NLRX1 Polyclonal antibody

Catalog Number: 17215-1-AP

Featured Product

23 Publications



Basic Information

Catalog Number:

17215-1-AP

Size:

150ul, Concentration: 550 ug/ml by Nanodrop;

Source:

Rabbit

Isotype:

IgG

Immunogen Catalog Number:

AG11000

GenBank Accession Number:

BC013199

GeneID (NCBI):

79671

UNIPROT ID:

Q86UT6

Full Name:

NLR family member X1

Calculated MW:

975 aa, 108 kDa

Observed MW:

100-110 kDa

Purification Method:

Antigen affinity purification

Recommended Dilutions:

WB: 1:1000-1:8000

IP: 0.5-4.0 ug for 1.0-3.0 mg of total protein lysate

IHC: 1:50-1:500

IF/ICC: 1:50-1:500

FC (Intra): 0.40 ug per 10⁶ cells in a 100 µl suspension

Applications

Tested Applications:

WB, IHC, IF/ICC, FC (Intra), IP, ELISA

Cited Applications:

WB, IHC, IF, IP, CoIP

Species Specificity:

human, mouse, rat

Cited Species:

human, mouse

Note-IHC: suggested antigen retrieval with TE buffer pH 9.0; (*) Alternatively, antigen retrieval may be performed with citrate buffer pH 6.0

Positive Controls:

WB : HEK-293 cells, HepG2 cells, mouse skeletal muscle tissue, MCF-7 cells, HeLa cells, mouse colon tissue, mouse heart tissue, THP-1 cells, rat colon tissue, rat heart tissue

IP : mouse heart tissue,

IHC : human heart tissue, human liver tissue, mouse heart tissue, human skeletal muscle tissue

IF/ICC : A549 cells,

FC (Intra) : HepG2 cells,

Background Information

NLRX1 (Nucleotide-binding oligomerization domain, leucine-rich repeat containing X1) is a member of the NOD-like receptor (NLR) family and is unique among NLRs due to its localization to the mitochondrial matrix. NLRX1 is a negative regulator of innate immunity, particularly in viral infections. It interacts with the mitochondrial antiviral signaling protein (MAVS) to attenuate antiviral responses. NLRX1 has been implicated in various diseases, including multiple sclerosis, colorectal cancer, and ischemia-reperfusion injury. Its role in controlling inflammation and mitochondrial function makes it a potential therapeutic target.

Notable Publications

Author	Pubmed ID	Journal	Application
Samuel A Killackey	30191480	Mol Cell Biochem	WB
Tünde Fekete	30344524	Front Immunol	WB
Qian Jiao	34825857	Sci Prog	WB, CoIP

Storage

Storage:

Store at -20°C. Stable for one year after shipment.

Storage Buffer:

PBS with 0.02% sodium azide and 50% glycerol, pH7.3

Aliquoting is unnecessary for -20°C storage

*** 20ul sizes contain 0.1% BSA

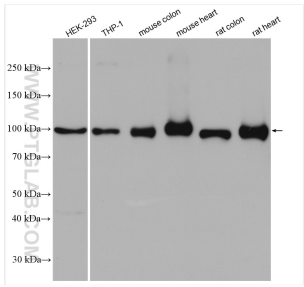
For technical support and original validation data for this product please contact:

T: 1 (888) 4PTGLAB (1-888-478-4522) (toll free in USA), or 1(312) 455-8498 (outside USA)

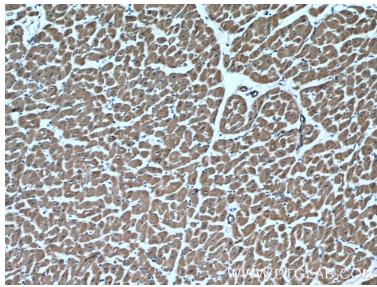
E: proteintech@ptglab.com
W: ptglab.com

This product is exclusively available under Proteintech Group brand and is not available to purchase from any other manufacturer.

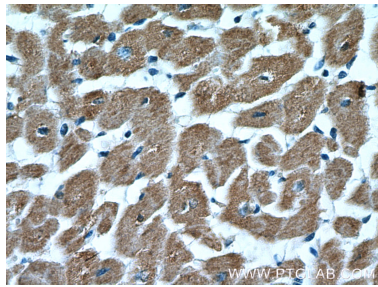
Selected Validation Data



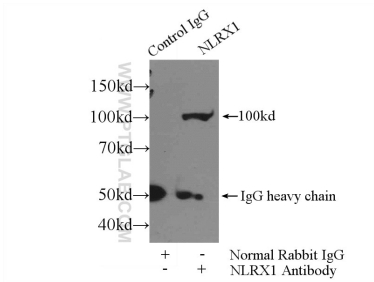
Various lysates were subjected to SDS PAGE followed by western blot with 17215-1-AP (NLRX1 antibody) at dilution of 1:4000 incubated at room temperature for 1.5 hours.



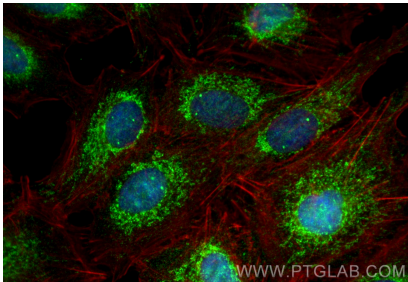
Immunohistochemical analysis of paraffin-embedded human heart tissue slide using 17215-1-AP (NLRX1 Antibody) at dilution of 1:200 (under 10x lens).



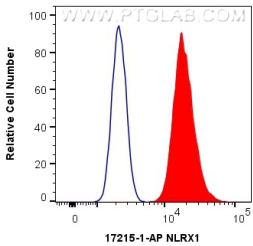
Immunohistochemical analysis of paraffin-embedded human heart tissue slide using 17215-1-AP (NLRX1 Antibody) at dilution of 1:200 (under 40x lens).



IP result of anti-NLRX1 (IP:17215-1-AP, 3ug; Detection:17215-1-AP 1:800) with mouse heart tissue lysate 3520ug.



Immunofluorescent analysis of (4% PFA) fixed A549 cells using NLRX1 antibody (17215-1-AP) at dilution of 1:200 and CoraLite@488-Conjugated Goat Anti-Rabbit IgG(H+L) (SA00013-2), CL594-Phalloidin (red).



1X10⁶ HepG2 cells were intracellularly stained with 0.4 ug Anti-Human NLRX1 (17215-1-AP) and CoraLite@488-Conjugated AffiniPure Goat Anti-Rabbit IgG(H+L) at dilution 1:1000 (red), or 0.4 ug Isotype Control. Cells were fixed with 4% PFA and permeabilized with Flow Cytometry Perm Buffer (PF00011-C).